



40ft Sailing Sloop Yacht

£9,995 • Brightlingsea United Kingdom (UK) • Used • 0

Presented by

Peter Marchant
Phone: 44(0)1206302003

Morgan Marine
The Boatyard, Shipyard
Estate
CO7 0AR Colchester
United Kingdom (UK)

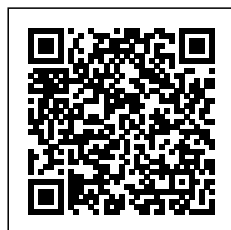


Details

| | |
|--------------|-------------------|
| Make: | 40ft Sailing |
| Model: | Sloop Yacht |
| Year: | 0 |
| Condition: | Used |
| Engine: | , 300 hp |
| Engine type: | |
| Fuel type: | Diesel |
| Length: | 12.4 m (40.68 ft) |
| Beam: | 3.8 m (12.47 ft) |
| Cabins: | 0 |
| Berths: | 0 |



Morgan Marine



7zea.com

Description

EN

Classic 1970s 40ft Sailing Sloop – Project Yacht with Timeless Appeal. Just arrived at Morgan Marine – a 1970s 40ft Sailing Sloop with elegant traditional lines, offering the perfect foundation for a rewarding restoration. Whether youre dreaming of a capable long-distance cruiser or a charming liveaboard, this vessel presents a fantastic opportunity. Stored ashore for the majority of her life, the hull was professionally gel-shielded prior to her launch in 2015, providing added protection and peace of mind. Recently upgraded with a brand-new Nanni N438 inboard engine, fitted by Morgan Marine in 2024. This is a rare chance to own a classic yacht with character and potential – ideal for enthusiasts looking to bring a beautiful sloop back to life. A true passion project! NB - being sold as a 'project' - it will require a level of refurbishment. Sold strictly as seen and sub-standard with faults unlisted.

Cabin: Can currently accommodate 6 berths in 3 cabins with 2 heads.

Electronics: 2x New 12v batteries 2024. 12v Battery charger. Removable electric panel.

Machinery: Nanni N438 inboard engine fitted new in 2024 by Morgan Marine. 2024 new engine beds and area surrounding.

General information

| | |
|------------|--------------|
| Make: | 40ft Sailing |
| Model: | Sloop Yacht |
| Year: | 0 |
| Condition: | Used |

Engine

| | |
|--------------|----------|
| Engine: | , 300 hp |
| Engine type: | |
| Fuel type: | Diesel |

Measurements

| | |
|---------|-------------------|
| Length: | 12.4 m (40.68 ft) |
| Beam: | 3.8 m (12.47 ft) |
| Deep: | 1.7 m (5.58 ft) |
| Weight: | 0 () |

Accommodation

| | |
|---------|---|
| Cabins: | 0 |
| Berths: | 0 |

Images



40ft Sailing Sloop yacht Project boat - ladder



40ft Sailing Sloop yacht Project boat - prop



40ft Sailing Sloop yacht Project boat - stern



40ft Sailing Sloop yacht Project boat - ladder



40ft Sailing Sloop yacht Project boat - Stern



40ft Sailing Sloop yacht Project boat - Stern view



40ft Sailing Sloop yacht Project boat - Stern



40ft Sailing Sloop yacht Project boat - side



40ft Sailing Sloop yacht Project boat - Back view



40ft sailing sloop yacht project boat - inside



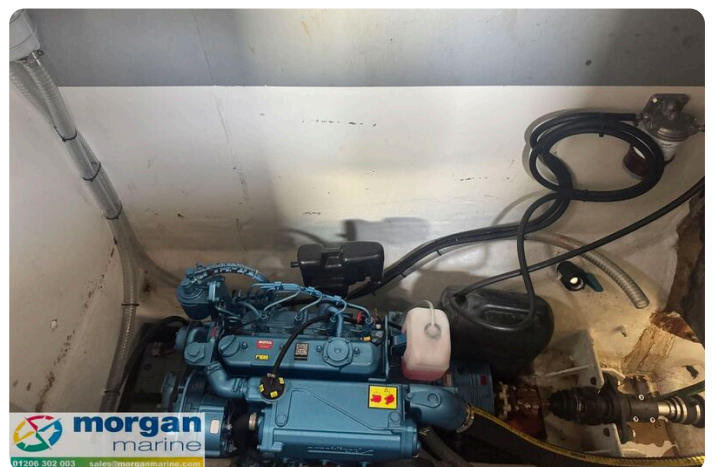
40ft sailing sloop yacht project boat - inside 2



40ft sailing sloop yacht project boat - inside 3



40ft sailing sloop yacht project boat - inside 4



40ft sailing sloop yacht project boat - engine



40ft sailing sloop yacht project boat - inside 10



40ft sailing sloop yacht project boat - inside 12



40ft sailing sloop yacht project boat - inside 14



40ft sailing sloop yacht project boat - inside 16

Morgan Marine

The Boatyard, Shipyard Estate
CO7 0AR Colchester
United Kingdom (UK)

Phone: 44(0)1206302003

<https://morganmarine.com>

