



Bavaria Cruiser 46

£184,950 • Essex United Kingdom (UK) • Used • 2015

Presented by

Peter Marchant
Phone: 44(0)1206302003

Morgan Marine

The Boatyard, Shipyard
Estate
CO7 0AR Colchester
United Kingdom (UK)

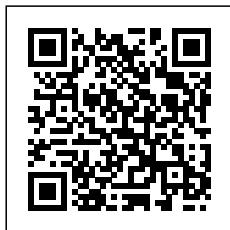


Details

| | |
|--------------|--------------------|
| Make: | Bavaria |
| Model: | Cruiser 46 |
| Year: | 2015 |
| Condition: | Used |
| Engine type: | |
| Fuel type: | Diesel |
| Length: | 14.27 m (46.82 ft) |
| Beam: | 4.35 m (14.27 ft) |
| Cabins: | 0 |
| Berths: | 0 |



Morgan Marine



7zea.com

Description

EN

This 2015 Bavaria Cruiser 46 is a superb example of a well cared for cruising yacht, offering comfort, performance, and reliability in equal measure. Regularly maintained with full service history and invoices, she has clearly been much loved by her owners and presents in beautiful condition throughout. Designed for easy handling and confident passage making, she is equipped with both bow and stern thrusters, making close-quarters manoeuvring effortless. Her fin keel with bulb provides excellent stability and strong sailing performance, while the electric windlass simplifies anchoring. She features an aluminum mast with Elvstrom sails, autopilot, and a good array of onboard electronics for safe and enjoyable cruising. Comfort is assured in all seasons thanks to the Webasto diesel heating system. Below decks, this yacht offers a bright and spacious interior layout with three generous double cabins and three heads, making her ideal for family cruising or charter use. The accommodation reflects Bavaria's renowned build quality and practical design. Powered by a reliable Volvo Penta D2-75 diesel engine producing 75hp with sail drive, she delivers smooth and dependable performance under power. Recently re-antifouled in 2025, she is fully prepared for the coming season. This Bavaria Cruiser 46 represents a turnkey opportunity for anyone seeking a capable, comfortable, and beautifully presented cruising yacht. Early viewing is a must!

Deck: Fin with bulb keel. GRP hull. Re-antifouled in 2025. In-mast reefing. Electric windlass with anchor, chain (5 meters) and rope. Bow locker. Fenders and lines. Bow roller. Grey canopy spray hood. Grey bimini top with frame and cover. Teak cockpit. Mooring cleats. Life rings. 2x steering wheel covers. Pulpit and Pushpit. Stern guard lines. 2x Wheel steering. Aluminum mast. Sloop rig. Stainless Steel standing rigging. Main sail - Elvstrom, in-mast with roller. Head sail - Elvstrom with roller. 2x Halyard winches. 2x Sheet winches. Swim platform with swim ladder. Fenders and lines.

Cabin: Forward bow 2 berth cabin with mattress, good headroom, hanging and over lockers storage. Hatches to deck. Stern port side double berth with storage. Stern starboard side double berth with storage - Both rooms with great headroom. 3 Ensuite heads with toilet, sink (pressurised water system with hot water), shower and storage. Separate single shower compartment. Large galley area to port side with twin stainless steel sinks, cooker, sink, microwave, fridge with freezer and lots of cupboard storage. L - shaped saloon cushioned seating with wooden table and TV. Lots of cupboard storage in saloon area. Comfort Brown interior upholstery. Wooden steps down from cockpit. Teak internal joinery.

Cockpit: Large fold down bathing platform with teak decking. Large deep cockpit with storage lockers. 2x steering wheels with covers. Bench style seating with removable cushions. Fold up teak table. Engine instrument range with cover. Sliding door hatch down to saloon area. Cockpit shower.

Electronics: Garmin GPSmap 820 chart plotter. Fusion audio MS-RA55 with speakers. Autopilot. AIS receiver. SSB beacon. Garmin Speed, log and wind digital display. GPS. VHF. Control panel. Navigation lights. Anchor lights. TV aerial. Instrument covers. Compass. Barometer. Echo / depth sounder. Shore power. Interior lighting. USB Socket. UK sockets.

Machinery: Single Volvo Penta D2-75 diesel engine on sail drive (75hp). Bow & stern thruster. Webasto diesel heating system. Fuel capacity - 210 litres. Water capacity - 360 litres. Holding tank capacity - 240 Litres.

General information

| | |
|------------|------------|
| Make: | Bavaria |
| Model: | Cruiser 46 |
| Year: | 2015 |
| Condition: | Used |

Engine

| | |
|--------------|--------|
| Engine type: | |
| Fuel type: | Diesel |

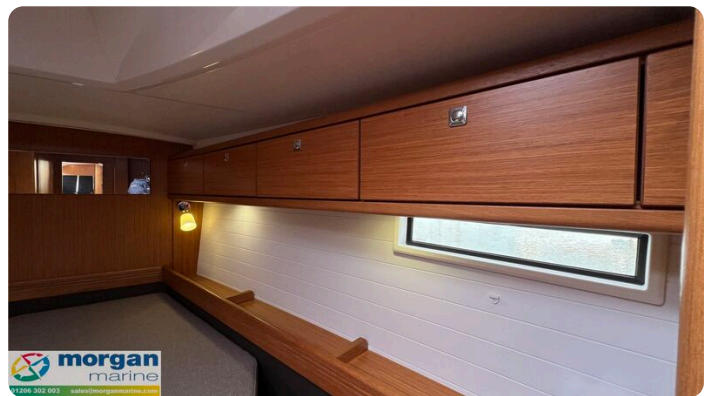
Measurements

| | |
|---------|--------------------|
| Length: | 14.27 m (46.82 ft) |
| Beam: | 4.35 m (14.27 ft) |
| Deep: | 2 m (6.56 ft) |
| Weight: | 0 () |

Accommodation

| | |
|---------|---|
| Cabins: | 0 |
| Berths: | 0 |

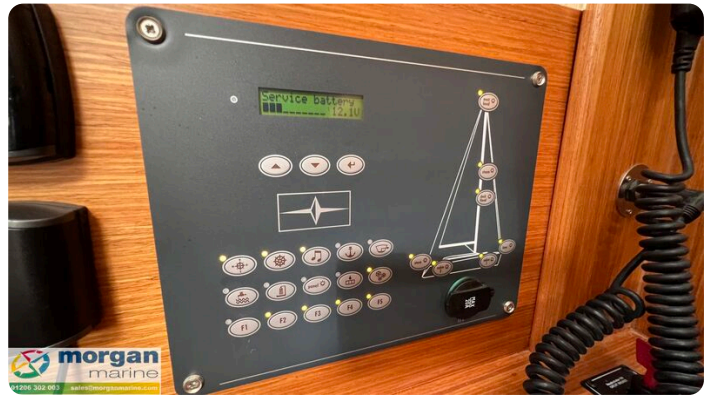
Images















Morgan Marine

The Boatyard, Shipyard Estate
CO7 0AR Colchester
United Kingdom (UK)

Phone: 44(0)1206302003

<https://morganmarine.com>

