



Cantieri Navali Vittoria CATAMARAN PASSAGER BOAT CLUB

Request price • CANARIAS Spain • Used • 1992

Presented by

Olivier Haroche
Phone: +34 637 510 716

Barcelona Yachting
Port Olimpic - Local 14
08005 Barcelona
Spain

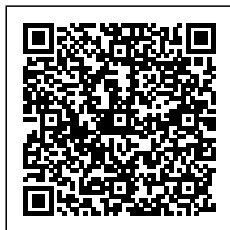


Details

Make:	Cantieri Navali Vittoria
Model:	CATAMARAN PASSAGER BOAT CLUB
Year:	1992
Condition:	Used
Engine:	DEUTZ MWM-TBD 234 V12, 863 hp
Engine type:	
Fuel type:	Diesel
Length:	34 m (111.55 ft)
Beam:	10 m (32.81 ft)
Cabins:	0
Berths:	0



Barcelona
Yachting



7zea.com

Description

FR
Cantieri Navali Vittoria CATAMARAN PASSAGER BOAT CLUB de 1992. Pavillon commercial Espagnol validé en 2025

FAIRE OFFRE

Avec une capacité de 350 personnes, ce catamaran de 40 mètres est un formidable outil de travail dans le clubbing.

Coque acier. Reprise de leasing possible ou autre forme de financement. Refit important en 2024

Possibilité de leasing sur mesure

Dossier complet en PDF sur demande

EN

Cantieri Navali Vittoria CATAMARAN PASSENGER BOAT CLUB from 1992

Spanish commercial flag valid until 2025

MAKE AN OFFER

With a capacity of **350 people**, this **40-meter catamaran** is an excellent working tool for clubbing.

Steel hull. Lease takeover possible or other financing options available. Major refit in **2024**.

Custom leasing options available.

Full dossier in **PDF format upon request.**

DE

Avec une capacité de 350 personnes, ce catamaran de 40 mètres est un formidable outil de travail dans le clubbing. Coque acier. Reprise de leasing possible ou autre forme de financement. Refit important en 2014, cuisine pro, l'équipement audio, video et lumière est de ce qui se fait de mieux de nos jours. Possibilité de leasing sur mesure

ES

Cantieri Navali Vittoria CATAMARÁN PASAJEROS BOAT CLUB de 1992

Bandera comercial española válida hasta 2025

HACER UNA OFERTA

Con una capacidad de **350 personas**, este **catamarán de 40 metros** es una excelente herramienta de trabajo para el mundo del clubbing.

Casco de acero. Posibilidad de asumir leasing o diferentes formas de financiación. Refit importante en **2024**.

Posibilidad de leasing a medida.

Dossier completo en **formato PDF bajo solicitud.**

General information

Make:	Cantieri Navali Vittoria
Model:	CATAMARAN PASSAGER BOAT CLUB
Year:	1992
Condition:	Used

Engine

Engine:	DEUTZ MWM-TBD 234 V12, 863 hp
Engine type:	
Fuel type:	Diesel

Measurements

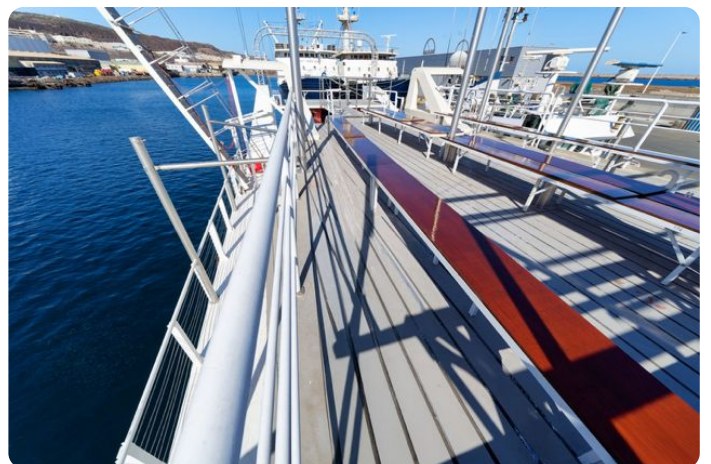
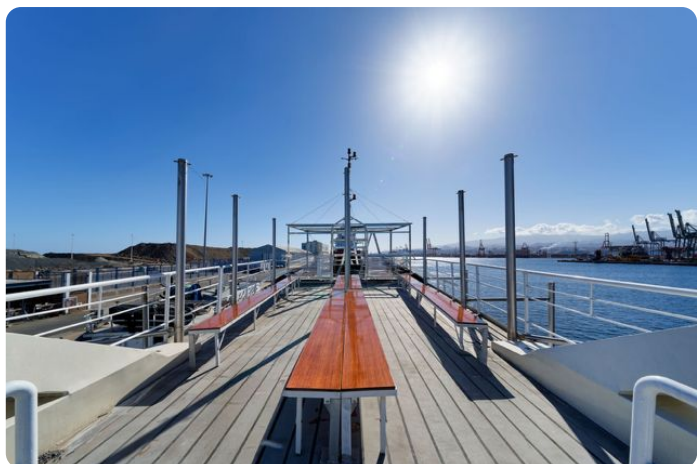
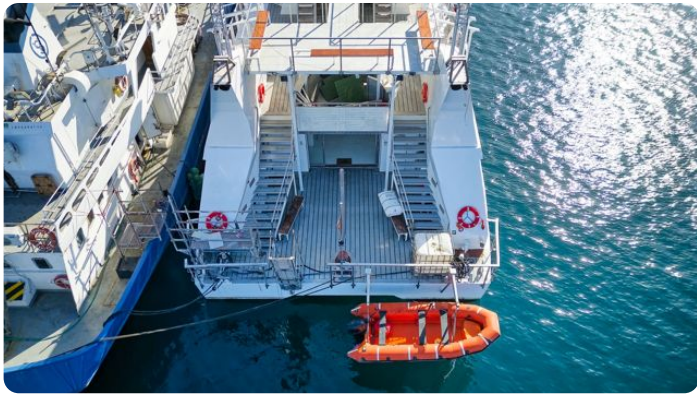
Length:	34 m (111.55 ft)
Beam:	10 m (32.81 ft)
Deep:	2 m (6.56 ft)
Weight:	0 kg (0.00 lb)

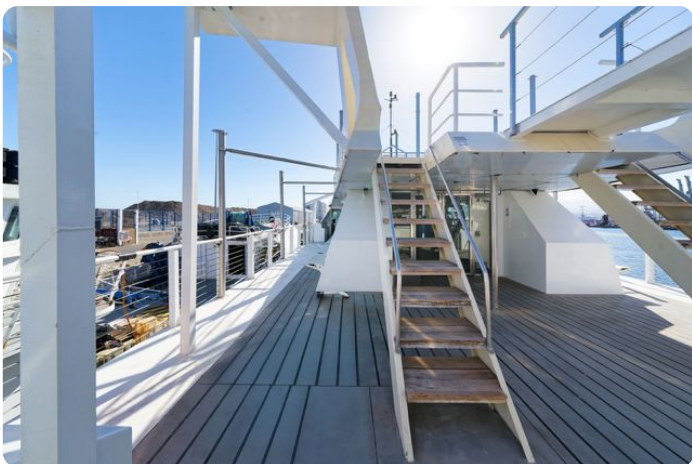
Accommodation

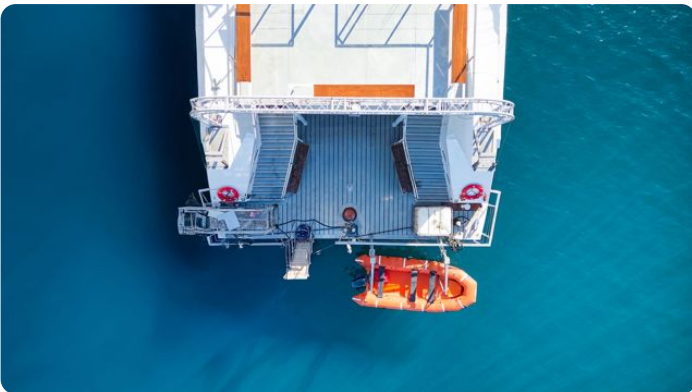
Cabins:	0
Berths:	0

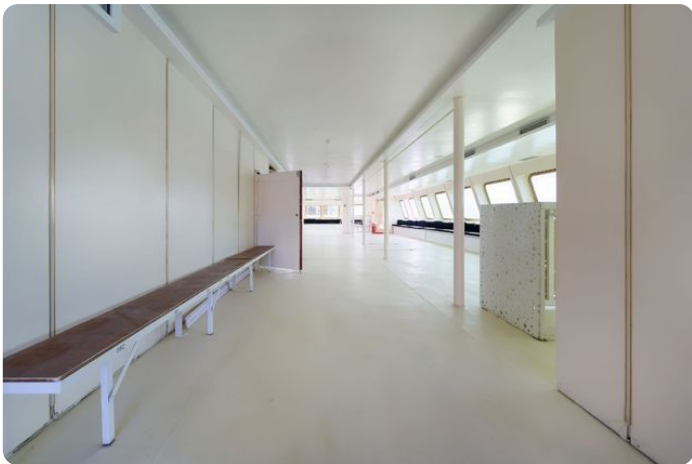
Images















Barcelona Yachting

Port Olímpic - Local 14

08005 Barcelona

Spain

Phone: +34 637 510 716

<https://www.barcelonayachting.com/>

