



Colvic 22 sea worker

£4,995 • Brightlingsea United Kingdom (UK) • Used • 1974

Presented by

Peter Marchant
Phone: 44(0)1206302003

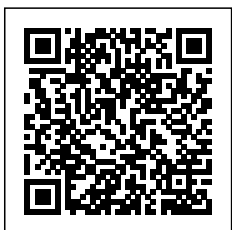
Morgan Marine

The Boatyard, Shipyard
Estate
CO7 0AR Colchester
United Kingdom (UK)

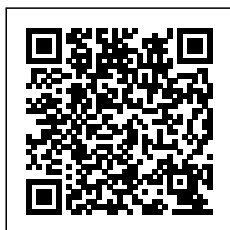


Details

Make:	Colvic
Model:	22 sea worker
Year:	1974
Condition:	Used
Engine:	, 300 hp
Engine type:	
Fuel type:	Diesel
Length:	6.71 m (22.01 ft)
Beam:	2.1 m (6.89 ft)
Cabins:	0
Berths:	0



Morgan Marine



7zea.com

Description

EN

Introducing Jaygo, a robust and seaworthy Colvic Sea worker 22 motorboat powered by a reliable Ford D Series 4-cylinder engine. Built in the UK by Colvic, she was designed with fishing, coastal work and cruising in mind, combining strength, simplicity and proven offshore capability. Jaygo is well-equipped with a Garmin Fish Finder 400c, Garmin GPSmap 550s, JRC LCD Radar 1000 and a Silva S10 VHF radio, along with fishing rod holders and an auxiliary Tohatsu 6hp outboard for added confidence at sea. Inside, she offers a practical forward V-berth and a galley area with sink and storage, making her not only a capable workhorse but also a comfortable coastal cruiser. Tough, dependable and ready for adventure! Early viewing is highly recommended.

Cabin: Forward V-shaped blue cushioned berth. Galley area with sink, and storage. First aid kit.

Cockpit: Door to wheelhouse with dash, engine controls and steering wheel. Large cockpit area with storage lockers and engine compartment. Life ring buoy. 2x 20 litre jerrycans. 1x Self inflating life jacket.

Electronics: Garmin fish finder 400c. Garmin GPSmap 550s. JRC LCD radar 1000. Silva s10 VHF radio. Compass. 12v Socket on dash. Isolator switch. Samsung Ipad - used for chart plotter. Baofeng dual band FM transceiver. Navigation lights. Anchor light. Automatic and manual bilge pump. Search light. Wheelhouse light. Electric windscreen wiper. FM/AM radio with speakers. Replacement horn and pump.

Machinery: Ford D Series 4 cylinder diesel engine. Fuel tank capacity - 100 Litres. New alternator in 2024. Auxiliary Tohatsu 6hp outboard - serial no - 020148AE.

General information

Make:	Colvic
Model:	22 sea worker
Year:	1974
Condition:	Used

Engine

Engine:	, 300 hp
Engine type:	
Fuel type:	Diesel

Measurements

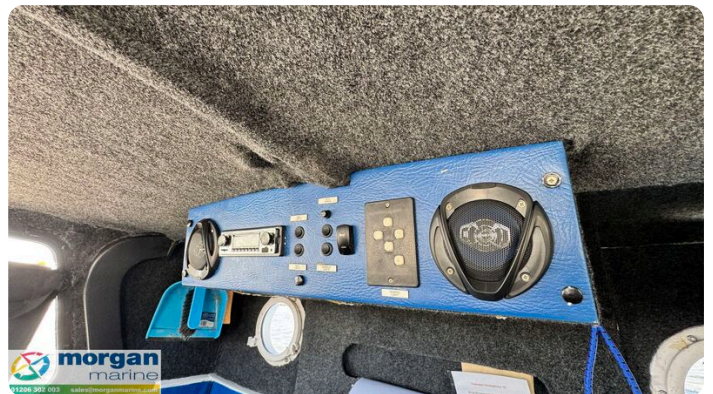
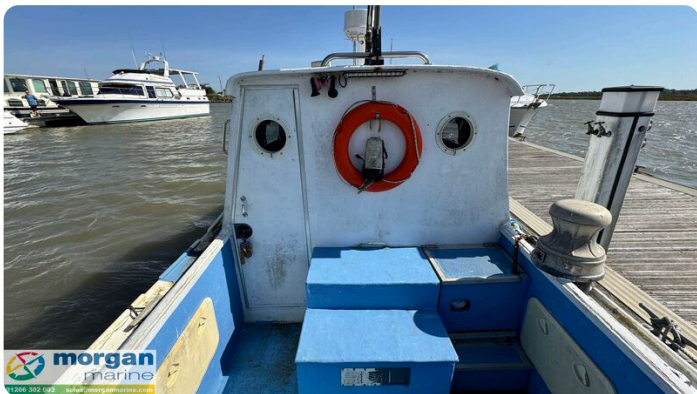
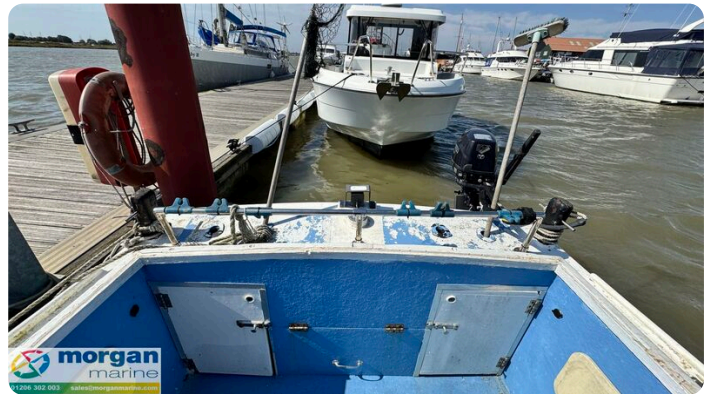
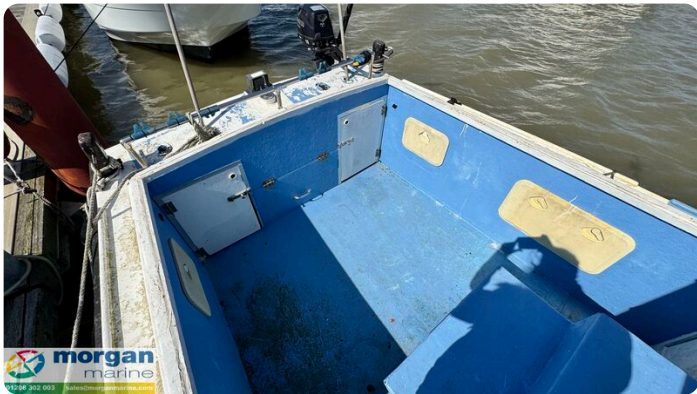
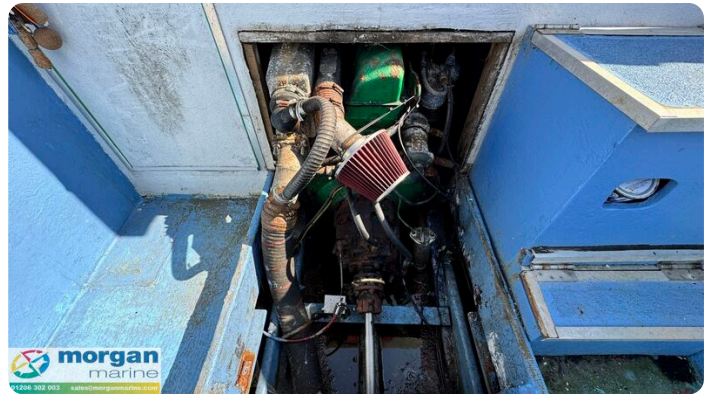
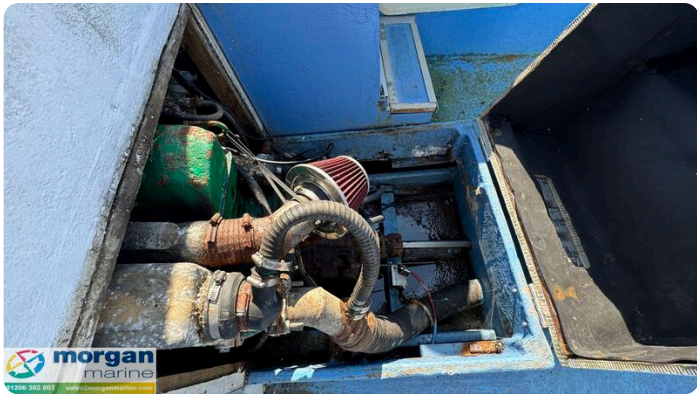
Length:	6.71 m (22.01 ft)
Beam:	2.1 m (6.89 ft)
Deep:	0.8 m (2.62 ft)

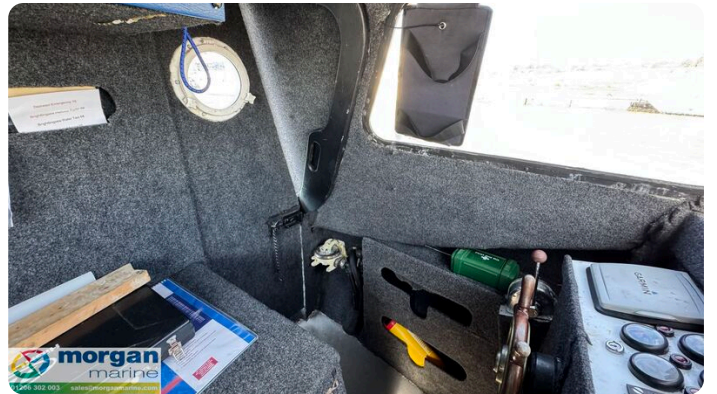
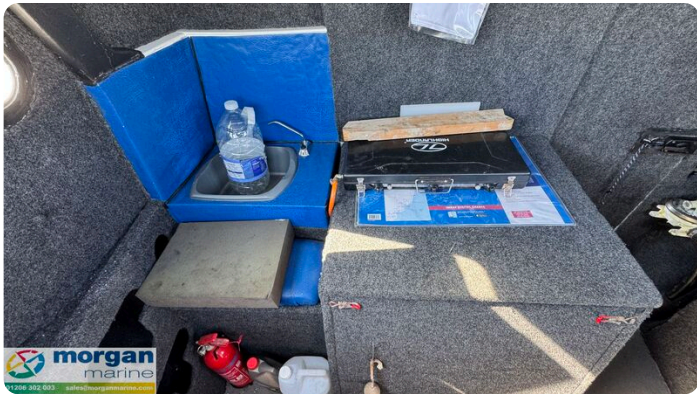
Accommodation

Cabins:	0
Berths:	0









Morgan Marine

The Boatyard, Shipyard Estate
CO7 0AR Colchester
United Kingdom (UK)

Phone: 44(0)1206302003

<https://morganmarine.com>

