



Colvic UFO 31 Masthead Sloop

£4,995 • Brightlingsea Regno Unito • Usato • 1979

Presentato da

Peter Marchant
Phone: 44(0)1206302003

Morgan Marine

The Boatyard, Shipyard
Estate
CO7 0AR Colchester
Regno Unito

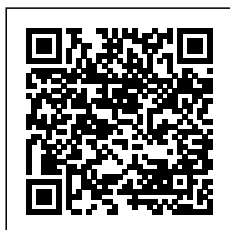


Dettagli

Costruttore:	Colvic
Modello:	UFO 31 Masthead Sloop
Anno:	1979
Condizione:	Usato
Motore:	, 300 hp
Tipo di motore:	
Tipo di carburante:	Carburante diesel
Lunghezza:	9.41 m (30.87 ft)
Larghezza:	3.06 m (10.04 ft)
Cabine:	0
Ancoraggi:	0



Morgan Marine



7zea.com

Descrizione

EN
1979 Colvic UFO 31 Masthead Sloop just in at Morgan Marine. Designed by industry renowned Holman and Pye, the Colvic UFO 31 sailboat range was built between 1976 and 1981. Light, stable and stiff, this boat is a fast and very seaworthy sailboat, designed for both sporty performance and comfortable cruising. This yacht offers a surprising spacious and well thought out interior, ideal for longer trips. Thanks to its solid construction and excellent sailing characteristics, the UFO 31 is a reliable and good sailing yacht. Early viewing is a must!

Cabin: Large saloon area with 2 settees and 2 pilot berths, Forepeak with 2 berths both with foam mattresses and cushions. Forward berth with deck hatch. Hanging wardrobe and lots of deep lockers and shelves. Toilet compartment with sink and sea toilet. Galley with Dometic 2 burner with oven stove, sink and storage. 2x Fire extinguishers and fire blanket.

Cockpit: Bench style seating cockpit with 4x cockpit lockers with storage. Tiller steering. Sliding hatch to enter saloon.

Electronics: Lowrance Link 8 VHF radio connected with Lowrance chartplotter / GPS (charts out of date). Radar reflector. Raymarine tiller pilot. Oil extractor. 2 starter and 1 leisure batteries with 100W solar panel and charger unit. Internal speakers and amplifier with jack input. NASA instruments - depth and wind (Wind speed instrument needs servicing and water speed needs replacing.) Compass. Hand held fog horn.

Machinery: Yanmar 2GM20FC 18hp diesel inboard engine with 2 cylinders and SD20 sail drive unit. Fixed prop. Engine of unspecified running hours, but has not been heavily used by the owner as sailing is preferred to motoring. Engine has been reliable and runs cleanly. Fuel tank capacity - 40 Litres.

Informazione generale

Costruttore:	Colvic
Modello:	UFO 31 Masthead Sloop
Anno:	1979
Condizione:	Usato

Motore

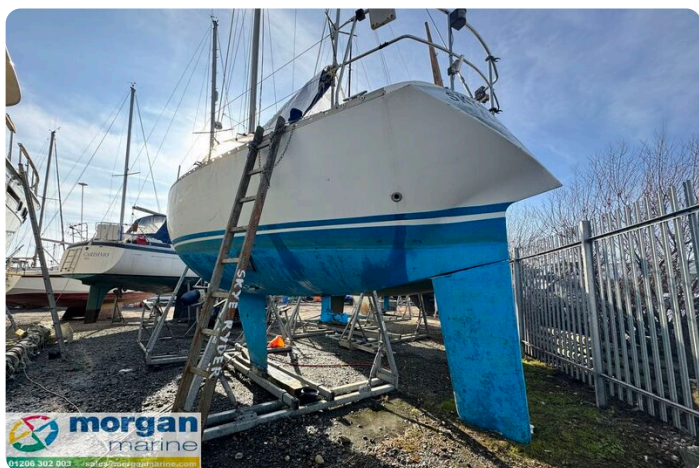
Motore:	, 300 hp
Tipo di motore:	
Tipo di carburante:	Carburante diesel

Misure

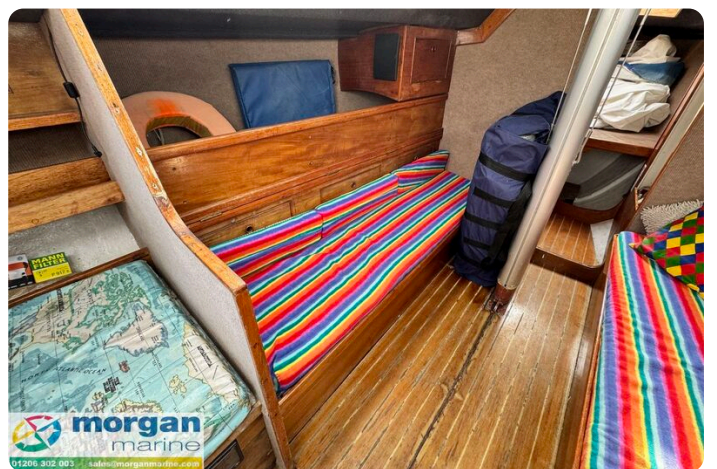
Lunghezza:	9.41 m (30.87 ft)
Larghezza:	3.06 m (10.04 ft)
Profondo:	1.68 m (5.51 ft)
Peso:	0 ()

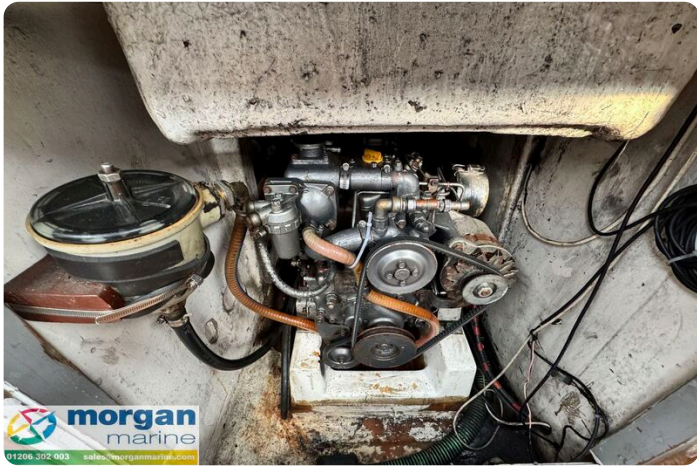
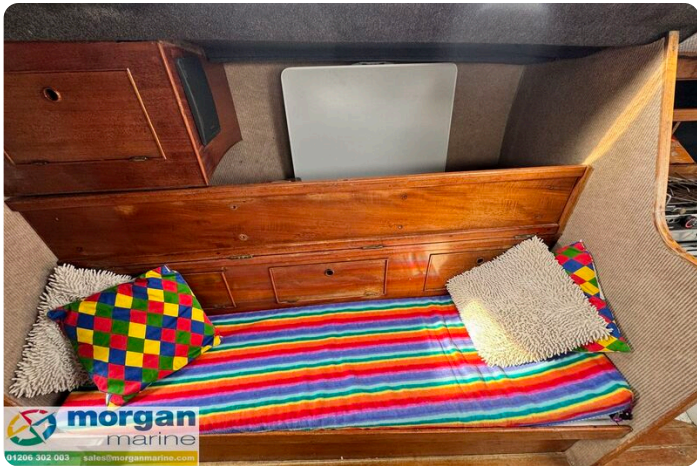
Alloggio

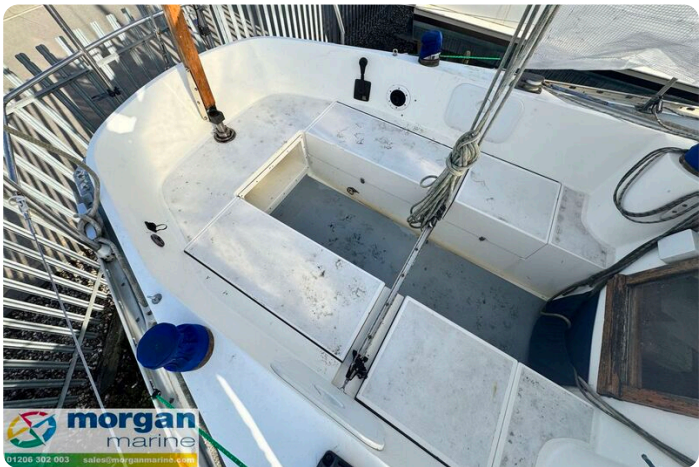
Cabine:	0
Ancoraggi:	0













Morgan Marine

The Boatyard, Shipyard Estate
CO7 0AR Colchester
Regno Unito

Telefono: 44(0)1206302003

<https://morganmarine.com>

