



# Fairline Targa 38

€179,000 • Wanssum Netherlands • Used • 2008

## Presented by

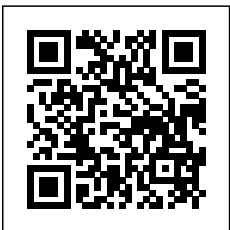
Bram de Groot  
Phone: 0031(0)478450015

**GrandYachts BV**  
Geijsterseweg 10  
5861 BL Wanssum  
Netherlands

**GRANDYACHTS®**

## Details

Make:	Fairline
Model:	Targa 38
Year:	2008
Condition:	Used
Hull:	Fiberglass
Engine:	Volvo Penta D4-300 2008
Engine type:	Inboard engine
Fuel type:	Diesel
Fuel tank:	635.95 l (168.00 gal)
Length:	12.13 m (39.80 ft)
Beam:	3.65 m (11.98 ft)
Cabins:	0
Berths:	2
Watertank:	295.26 l (78.00 gal)



GrandYachts BV



7zea.com

# Description

**Boat location: Wanssum / The Netherlands - inside GrandYachts showroom**

VAT-paid

75 pictures on our website grandyachts.eu and in high-resolution upon request by mail

This is the boat that sets the benchmark for the modern luxury power cruiser. The **Fairline Targa 38** is renowned for sparkling performance and handling, clean contemporary styling, and large, luxuriously equipped living areas. It has been one of the fastest-selling models in the Fairline range and, in 2007, won the prestigious 'European Powerboat of the Year' in the 30ft to 40ft category. That pedigree should put it top of any list for someone looking to buy a second-hand power boat.

The Fairline Targa 38 is a luxury power cruiser, equally at home cruising round the headland or setting the pace in open waters. Think of it as a sports utility vessel that Motor Boats Monthly says has "a perfectionist attitude to outdoor life". It offers sporting performance and handling, practical space and comfort for entertaining, generous accommodation for longer trips and superb attention to detail.

Fairline has always been at the forefront of luxury by giving you a craft that offers far more than just something a little bit special. The Targa 38 fits in perfectly with the company's name.

A Fairline Targa 38 owner is a proud owner. They know that their Targa is part of a world-renowned range that sets the benchmark for the modern power cruiser.

The Fairline Targa 38 OPEN, with its sophisticated retractable hard top design, is a Targa at its best when open wide to the world around it.

## Specifications

- Length overall (including pulpit): 39ft 10in (12.13m)
- Length overall (including pulpit): 40ft 9in (12.43m) with submersible platform
- Length overall (excluding pulpit): 38ft 1in (11.61m)
- Beam (including gunwale): 11ft 11in (3.64m)
- Number of berths: 4 - 7
- Draught: 3ft 4in (1.02m) unloaded
- Height above waterline (including arch and navigation light mast): 12ft 10in (3.91m)
- Transport height: 11ft 3in (3.44m)
- Dry weight (approximate): 7.57 tons (7,687kg)
- Fuel capacity: 140 gallonss/168 US gallons (636 litres)
- Water capacity (including calorifier): 65 gallons/78 US gallons (296 litres)
- Kohler 6kw marine diesel generator
- Webasto marine diesel heater
- Raymarine chartplotter
- Raymarine radar
- Raymarine echosounder
- Raymarine GPS
- Sidepower bow thruster

- Very strong hull design gives probably the best handling of any comparable boat in its class.
- Good driving position - no need to stand while driving to see where you're going.
- Good all round visibility from the helm position.
- Well laid out, feels much larger than it actually is.
- Abundance of storage.
- Good size heads.
- Large galley fridge.
- Huge aft cabin with twin bunks that convert to double bed.

## Disclaimer

GrandYachts offers the details of this vessel in good faith but cannot guarantee or warrant the accuracy of this information nor warrant the condition of the vessel. A buyer should instruct his agents, or his surveyors, to investigate such details as the buyer desires validated. This vessel is offered subject to prior sale, price change, or withdrawal without notice.

## General information

Make:	Fairline
Model:	Targa 38
Year:	2008
Condition:	Used
Hull:	Fiberglass

## Engine

Engine:	Volvo Penta D4-300 2008
Engine type:	Inboard engine
Fuel type:	Diesel
Fuel tank:	635.95 l (168.00 gal)

## Measurements

Length:	12.13 m (39.80 ft)
Beam:	3.65 m (11.98 ft)
Deep:	0.66 m (2.17 ft)

Accommodation

Cabins:	0
Berths:	2
Watertank:	295.26 l (78.00 gal)
Holdingtank:	70 l (18.49 gal)

Images



Fairline Targa 38



Fairline Targa 38



Fairline Targa 38



Fairline Targa 38





Fairline Targa 38



Fairline Targa 38



Fairline Targa 38



Fairline Targa 38



Fairline Targa 38



Fairline Targa 38





Fairline Targa 38



Fairline Targa 38



Fairline Targa 38



Fairline Targa 38



Fairline Targa 38



Fairline Targa 38





Fairline Targa 38



Fairline Targa 38



Fairline Targa 38



Fairline Targa 38



Fairline Targa 38



Fairline Targa 38





Fairline Targa 38



Fairline Targa 38



Fairline Targa 38



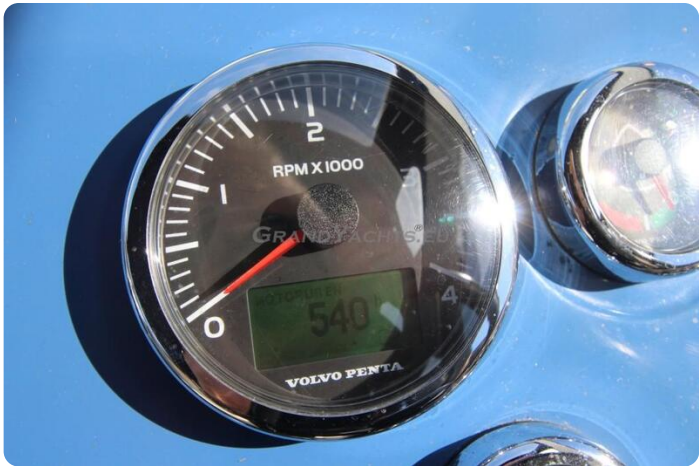
Fairline Targa 38



Fairline Targa 38



Fairline Targa 38



Fairline Targa 38



Fairline Targa 38



Fairline Targa 38



Fairline Targa 38



Fairline Targa 38



Fairline Targa 38





Fairline Targa 38



Fairline Targa 38



Fairline Targa 38



Fairline Targa 38



Fairline Targa 38



Fairline Targa 38



Fairline Targa 38



Fairline Targa 38



Fairline Targa 38



Fairline Targa 38



Fairline Targa 38



Fairline Targa 38





Fairline Targa 38



Fairline Targa 38



Fairline Targa 38



Fairline Targa 38



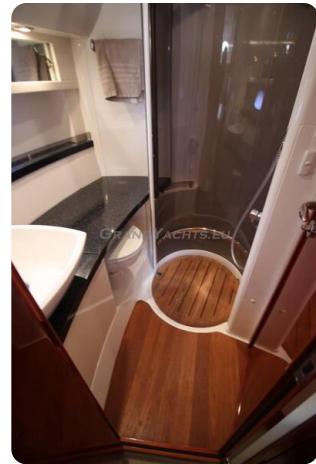
Fairline Targa 38



Fairline Targa 38



Fairline Targa 38



Fairline Targa 38



Fairline Targa 38



Fairline Targa 38



Fairline Targa 38



Fairline Targa 38





Fairline Targa 38



Fairline Targa 38



Fairline Targa 38



Fairline Targa 38



Fairline Targa 38



Fairline Targa 38



Fairline Targa 38



Fairline Targa 38



Fairline Targa 38



Fairline Targa 38



Fairline Targa 38

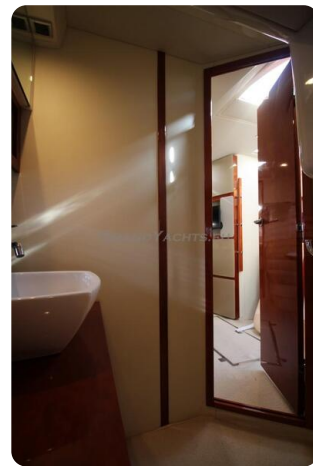


Fairline Targa 38





Fairline Targa 38



Fairline Targa 38



Fairline Targa 38



Fairline Targa 38



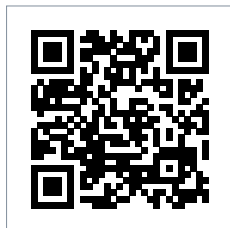
Fairline Targa 38

**GrandYachts BV**

Geijsterseweg 10  
5861 BL Wanssum  
Netherlands

Phone: 0031(0)478450015

<https://grandyachts.eu>



**GRANDYACHTS®**