



Fairline Targa 50 GT

£379,950 • Weymouth United Kingdom (UK) • Used • 2012

Presented by

Justin Garwell
Phone: +44 (0) 1305 766504

JD YACHTS LIMITED
80 THE ESPLANADE
DT4 7AA WEYMOUTH
United Kingdom (UK)

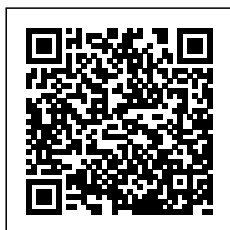


Details

Make:	Fairline
Model:	Targa 50 GT
Year:	2012
Condition:	Used
Engine:	Volvo D9-575, 575 hp
Engine type:	
Fuel type:	Diesel
Length:	15.55 m (51.02 ft)
Beam:	4.47 m (14.67 ft)
Cabins:	0
Berths:	0



JD YACHTS
LIMITED



7zea.com

Description

ENG 2012. 2 x 575 HP Volvo D9-575 6 berths in 3 cabins Lying: Weymouth UK	Chaise-longue seat Controls for engine bay fire extinguisher system Drinks holders Electronic single-lever throttle and gear controls for port and starboard engines Fuel gauges Full engine instrumentation including; tachometers, temperature gauges, audible alarms and engine hour meters Helm blower Helm position indicator High speed magnetic compass Powered steering Red night-light illumination to helm Remote anchor winch controls Searchlight controls Switches for navigation and riding lights, windscreen wipers and engine bay extractor fans Trim tab controls
ENG Extras Reverse Cycle Air Conditioning Throughout Eberspacher Heating Throughout Upgraded 13.5kW Onan Generator SidePower Bow Thruster with Remote Control SidePower Stern Thruster with Remote Control Upgraded Raymarine HybridTouch Chartpotter Garmin GHP 10 Autopilot Garmin GPSmap 7012 (12 inch) Teak Laid Bathing Platform Teak Laid Cockpit Hydraulic Tender Launch System Letterbox Passarelle Aft Electric Sun Awning Electric Blinds to Saloon Ceiling Blue Mood Lighting to Cockpit Blue Mood Lighting to Side Decks Washer/ Dryer 32" Flatscreen TV to Saloon BOSE 321 Entertainment System	Electrical Systems 230 - 240V 50Hz All 240V, 24V and 12V circuits (where applicable) protected by circuit breakers with main electrical load control panel Emergency VHF radio - 12V power supply Generator 9.5kW Heavy duty circuit breakers Isolating switches to all batteries 12 Volt Voltage dropper from domestic batteries 24 Volt Batteries - 2 x heavy duty batteries exclusively for port engine starting Batteries - 2 x heavy duty batteries exclusively for starboard engine starting Batteries - 4 x heavy duty batteries wired in parallel supplying domestic services and port engine starting Circuit breaker for anchor winch Emergency battery coupling system permits each engine to start from opposite battery bank Regulated charger 100amp 240 Volt Polarity check and earth leakage protection system Power points throughout the boat (fed from shore power or generator) Regulated 75amp charger for domestic batteries Shore power supply Spare circuit breakers for optional equipment
Standard Specification	Cockpit 12V heavy duty weatherproof socket Access to aft utility room Access to side deck Aft cockpit hood with clear panels and zipped doorway Bar unit Bathing platform lights Cockpit seating with adjustable backrest Deck level lighting Drinks holders Engine bay access hatch with stainless steel gas struts GRP cockpit table convertible to sunbed Life raft stowage Manual bilge pump(s) Teak laid floor throughout self-draining cockpit Twin transom gates
Deck Anchor chain locker Anchor winch (electric) Anchor winch controls Bathing platform ladder Calibrated anchor chain Foredeck drinks holders Foredeck glazing Foredeck lockers Foredeck stowage for secondary life raft Fuel fillers Full set of IMCO navigation lights Handrail Hot and cold water transom shower Moulded non-slip deck surface Remote control searchlight Riding light Rubbing strake with stainless steel inserts Self-stowing Delta® anchor Split windscreen Stainless steel aft fairlead(s) Stainless steel bow, spring and stern cleats Stainless steel bow fairlead(s) Stainless steel pulpit Teak laid bathing platform Twin horns Water filler(s) Windscreen washers Windscreen wipers	Hullform And Construction All gel coat and glass fibre hand laid with unidirectional, biaxial and woven rovings Bowthruster
Helm Position 12V socket Adjustable/tilt steering wheel Adjustable air vents Bilge pump switches with integral operating warning lights and audible alarms Bowthruster controls	

Deep 'V' forward 12.5° deadrise aft
Design, layout and detailing by the Fairline Design Team.
Naval architecture and structural engineering by Bernard Olesinski

Feature windows with opening portholes
Full length hull design
Full length moulded spray deflectors
Hull/deck join tapped and bonded
Integrally moulded engine bearers
Isophthalic gel coat backed by isophthalic resin-rich powder-bound glass mat
The deck incorporates polyurethane foam cores for high strength and excellent thermal insulation
Transverse and longitudinal strengthening stringers throughout hull

Deck Saloon

22" flatscreen TV with Video iBoat dock
Folding dining table with hi/lo adjustment
Hardtop skylight and overhead lighting
Pneumatically sealed powered hard top
Random teak floor
Sideboard with stowage
Sliding patio door to cockpit with pleated blinds
Sofa with stowage

Galley

Chopping board to sink infill
Crockery stowage
Electric ceramic/halogen hob
Extractor fan
Integrated waste bin
Microwave combi oven
Overhead lighting
Random teak floor
Sink with hot and cold mixer tap
Stowage cupboards and drawers
Twin drawer refrigerator

Lobby

Access to electrical control panel
Access to master cabin, two guest cabins and day head
Handrail
Lighting to stair risers
Overhead lighting
Space for domestic appliance

Master Stateroom

Aluminium venetian blinds
Double bed with storage drawers
Escape hatch to foredeck
Feature windows with opening portholes
Full-height shelving unit
Full-height standing headroom
Lockers (overhead)
Master cabin skylight with blind
Overhead feature lighting
Reading lights
Vanity unit with stool
Wardrobe with mirrored doors

Master En Suite

3 large hull windows with single opening port hole
220V/240V shaving point
Automatic shower tray pump-out system
Blinds
Electric silent-flush freshwater toilet
En suite door with feature glass
Extractor fan
Full set of bathroom fittings
Full size shower with seat, hinged door and solid teak gratings

Mirror
Mirrored lockers
Overhead lighting
Random teak floor
Stowage cupboard(s)
Vanity unit locker and basin with hot and cold pressurised water

Port Guest Cabin

Aluminium venetian blinds
Bedside table
Feature windows with single opening porthole
Full length berths x 2
Lockers (mid-level)
Overhead lighting
Reading lights
Wardrobe with mirrored doors

Starboard Guest Cabin

Aluminium venetian blinds
Bedside table
Feature windows with single opening porthole
Full length berths x 2 with sliding conversion to double bed
Lockers (mid-level)
Overhead lighting
Reading lights
Wardrobe with mirrored doors

Starboard Guest Cabin En Suite

220V/240V shaving point
Automatic shower tray pump-out system
Day Access
Electric silent-flush freshwater toilet
Extractor fan
Full set of bathroom fittings
Full standing height shower with solid teak gratings and hinged acrylic door
Mirror
Mirrored lockers
Overhead ceiling lights
Random teak floor
Stowage cupboard(s)
Vanity unit locker and basin with hot and cold pressurised water

Engines And Sterngear

Aerodynamically designed engine air intakes
Automatic bilge pumps for forward bilge, engine bay and rudder bay with manual 'on' override
Automatic engine bay fire extinguisher system
Dripless shaft seals
Electric engine bay fan(s)
Electro-hydraulic trim tabs with cathodic protection
Engine bay lights
Engine room soundproofing
Exhaust overheat warning system
High capacity emergency manual bilge pump system with dedicated valves
Manganese bronze 'P' brackets
Manganese bronze propellers contra-rotating
Sea cocks on all inlets/outlets below waterline
Stainless steel alloy shafts

Fuel System

Changeover valve system to permit each engine to draw fuel from, and return fuel to, either tank
Emergency fuel shut-off valves accessible via cable-operated remote control
High capacity water separators and fuel filters
Individual fillers and vents to port and starboard
Twin fuel tanks

Freshwater System
Automatic, pressurised supply
Calorifier hot water system
Water tank(s)

General information

Make:	Fairline
Model:	Targa 50 GT
Year:	2012
Condition:	Used

Engine

Engine:	Volvo D9-575, 575 hp
Engine type:	
Fuel type:	Diesel

Measurements

Length:	15.55 m (51.02 ft)
Beam:	4.47 m (14.67 ft)
Deep:	1.2 m (3.94 ft)
Weight:	16000 ()

Accommodation

Cabins:	0
Berths:	0

Images



Image courtesy of JD Yachts



Image courtesy of JD Yachts



Image courtesy of JD Yachts



Image courtesy of JD Yachts



Image courtesy of JD Yachts



Image courtesy of JD Yachts



Image courtesy of JD Yachts



Image courtesy of JD Yachts



Image courtesy of JD Yachts



Image courtesy of JD Yachts



Image courtesy of JD Yachts



Image courtesy of JD Yachts



Image courtesy of JD Yachts



Image courtesy of JD Yachts



Image courtesy of JD Yachts



Image courtesy of JD Yachts



Image courtesy of JD Yachts



Image courtesy of JD Yachts



Image courtesy of JD Yachts



Image courtesy of JD Yachts



Image courtesy of JD Yachts



Image courtesy of JD Yachts



Image courtesy of JD Yachts



Image courtesy of JD Yachts



Image courtesy of JD Yachts



Image courtesy of JD Yachts



Image courtesy of JD Yachts



Image courtesy of JD Yachts



Image courtesy of JD Yachts



Image courtesy of JD Yachts



Image courtesy of JD Yachts



Image courtesy of JD Yachts



Image courtesy of JD Yachts



Image courtesy of JD Yachts



Image courtesy of JD Yachts



Image courtesy of JD Yachts



Image courtesy of JD Yachts



Image courtesy of JD Yachts



Image courtesy of JD Yachts



Image courtesy of JD Yachts

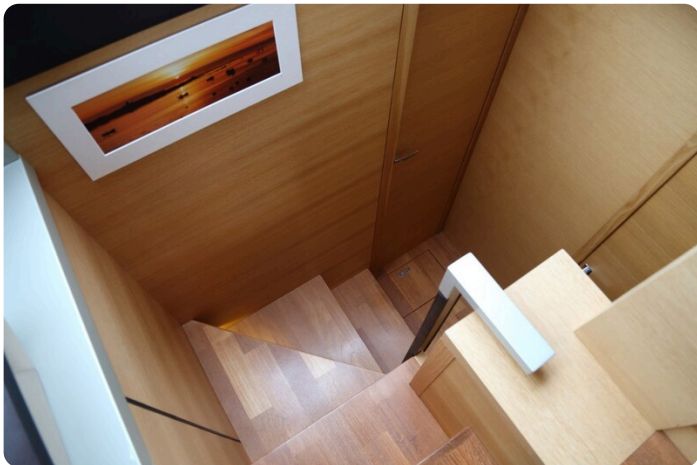


Image courtesy of JD Yachts



Image courtesy of JD Yachts

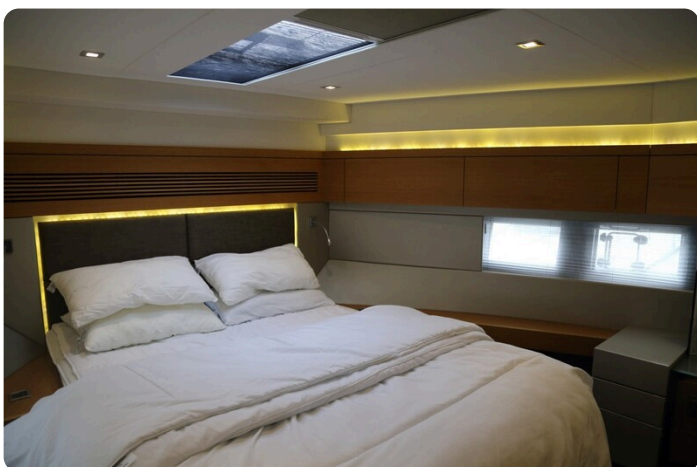


Image courtesy of JD Yachts



Image courtesy of JD Yachts



Image courtesy of JD Yachts



Image courtesy of JD Yachts



Image courtesy of JD Yachts



Image courtesy of JD Yachts



Image courtesy of JD Yachts



Image courtesy of JD Yachts



Image courtesy of JD Yachts



Image courtesy of JD Yachts



Image courtesy of JD Yachts



Image courtesy of JD Yachts



Image courtesy of JD Yachts



Image courtesy of JD Yachts



Image courtesy of JD Yachts



Image courtesy of JD Yachts



Image courtesy of JD Yachts



Image courtesy of JD Yachts



Image courtesy of JD Yachts



Image courtesy of JD Yachts



Image courtesy of JD Yachts

JD YACHTS LIMITED

80 THE ESPLANADE

DT4 7AA WEYMOUTH

United Kingdom (UK)

Phone: +44 (0) 1305 766504

<http://jdyachts.com>



 YACHTS.