



Fairline Targa 62 GT

£399,950 • Ipswich United Kingdom (UK) • Used • 2006

Presented by

Justin Garwell
Phone: +44 (0) 1305 766504

JD YACHTS LIMITED

80 THE ESPLANADE
DT4 7AA WEYMOUTH
United Kingdom (UK)

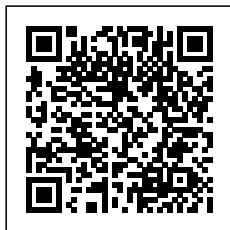


Details

Make:	Fairline
Model:	Targa 62 GT
Year:	2006
Condition:	Used
Engine:	Caterpillar C18, 1015 hp
Engine type:	
Fuel type:	Diesel
Length:	18.9 m (62.01 ft)
Beam:	4.75 m (15.58 ft)
Cabins:	0
Berths:	0



JD YACHTS
LIMITED



7zea.com

Description

ENG
2006. 2 x 1015 HP Caterpillar C18
6 berths in 3 cabins plus crew
Lying: Ipswich UK

ENG
Extras

Raymarine C120 plotter/GPS/Radar with open 4 KW open scanner
Raymarine Axiom 9" Touchscreen MFD
Raymarine Flir M232 Thermal Night Vision Camera
Raymarine AR200 Augmented Reality
KVH TracVision
Blue Mood Lighting
Chain Counter
Heated Towel Rails to Master & Day Heads
Electric Helm Seats
Eberspacher D8LC Diesel Heating inc Windscreen Demisters
Garage stowage with electric winch for 3.20M Tender
Hydraulic Bow & Stern Thrusters with Remote
TV to Port Cabin
Dishwasher
Deck LED lighting
Washer/Dryer (New 2021)
Fitted Crew Cabin
Master Mid Cabin Draw Unit in lieu of standard
4G Wifi System
Smart TV to Saloon
Bimini Cover for Aft Bathing Area
H4 Rope Cutters
Digital Safe

Standard Specification

Cockpit

Toughened glass windscreen and side windows
Two windscreen wipers
Windscreen washers
Windscreen cover
Powerdrop windows port and starboard
Twin independent Recaro helm and co-pilot seats with electric adjustment
Footrest and high-level platform
Fully integrated variable speed air vents built into ergonomically functional helm
Coated suede finish console
Titanium finish instrument panels
Tilt- adjustable steering wheel
Throttle and gear controls
Trim tab, searchlight and bowthruster controls
Helm position indicator
High speed compass
GPS radar/chartplotter interfaced with autopilot
Echosounder and speedometer/distance log with sea water temperature read out
Radio telephone
12v socket
Full engine instrumentation including: tachometers, oil pressure gauges, temperature gauges and battery condition indicators
Fuel contents gauges
Domestic water contents gauge
Engine hour meters
Remote anchor winch controls
Waterproof switches for navigation and riding lights, windscreen wipers, bilge pumps and engine bay extractor fans
Chart table and light

Chart stowage
Red LED night illumination to helm
Grab rail
Glove locker with stereo radio/CD
Drinks holders
Bilge pump operating warning lights and audible alarms

Deck

Stainless steel through-hull anchor system
Delta anchor
25 fathoms chain
Stainless steel bow fairlead
Bow, spring and stern cleats
Fairleads fore and aft
Stainless steel pulpit with intermediate lifeline
Stainless steel rubbing strake
Full set of IMCO navigation lights
Riding light
Recessed self-draining area on foredeck for coachroof sun cushions with adjustable backrests
Foredeck lockers with deck-wash outlets and liferaft stowage
Aft deck-wash outlet in transom locker
Remote control searchlight
Horn
Water and fuel fillers
Moulded non-slip deck surface
Transom gate from cockpit to integral teak-laid bathing platform
Hot & cold water transom shower
Concealed bathing platform ladder

Galley

Avonite worktop with covers and fiddles
Twin sinks with hot and cold mixer tap
Electric hob
Extractor unit
Combination microwave oven
220L/7.7 cu. ft. Fridge/Freezer
Halogen ceiling and worktop lights
Stowage cupboards
Black American walnut non-slip floor with stowage beneath
Towel rail holder
Concealed waste bin
Handrails
Twin stainless steel portholes
Power points

Mechanical

Engine room soundproofing with GRP liner
Engine bay access via sealed door from aft utility room
Secondary engine bay access hatch through cockpit sole
Water cooled engine exhausts with silencers and side outlets
Aerodynamically designed engine air intakes
Automatic engine bay fire extinguishers and shutdown system
Stainless steel shafts (TEMET)
4-blade contra-rotating Manganese Bronze propellers
Manganese Bronze 'P' brackets
Balanced rudders
Cathodic protection
Automatic bilge pumps for engine bay and rudder bay with manual 'on' override
Electric engine bay fans
Engine bay lights
Sea cocks on all inlets/outlets below waterline
All stern gear, engines, fuel tanks etc. electrically bonded
Exhaust overheat warning system
Dripless shaft seals

Standard Specification

Fully powered opening roof panel in hardtop
Hardtop skylight and overhead lighting
Seating for 4 alongside helm seat with fold-out occasional table
U-shaped central dining area around folding lacquered timber table
Cabin seating opposite
Full cockpit galley area including griddle, fridge, icemaker, coolbox, sink and waste bin
Stowage lockers under cockpit seats
Teak-laid floor throughout
Non-absorbent foam cushions for port and starboard aft sundecks
Drinks holders
Transom gate
Walkway access via transom deck to port and starboard side decks
Stainless steel handrails
Garage with winch system beneath port sundeck
Fender stowage beneath starboard sundeck
Engine room access hatch
Access to aft utility room/crew cabin
Low-level and overhead cockpit lighting
Blue LED lighting to aft deck area
Hot/cold transom shower
Heavy duty 12v socket

General information

Make:	Fairline
Model:	Targa 62 GT
Year:	2006
Condition:	Used

Engine

Engine:	Caterpillar C18, 1015 hp
Engine type:	
Fuel type:	Diesel

Measurements

Length:	18.9 m (62.01 ft)
Beam:	4.75 m (15.58 ft)
Deep:	1.37 m (4.49 ft)
Weight:	23573 ()

Accommodation

Cabins:	0
Berths:	0

Images



Image courtesy of JD Yachts



Image courtesy of JD Yachts



Image courtesy of JD Yachts



Image courtesy of JD Yachts



Image courtesy of JD Yachts



Image courtesy of JD Yachts



Image courtesy of JD Yachts



Image courtesy of JD Yachts



Image courtesy of JD Yachts



Image courtesy of JD Yachts



Image courtesy of JD Yachts



Image courtesy of JD Yachts



Image courtesy of JD Yachts



Image courtesy of JD Yachts



Image courtesy of JD Yachts



Image courtesy of JD Yachts



Image courtesy of JD Yachts



Image courtesy of JD Yachts

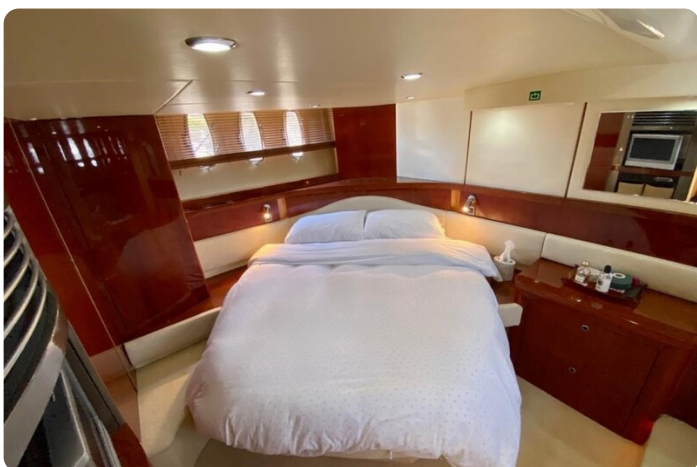


Image courtesy of JD Yachts



Image courtesy of JD Yachts



Image courtesy of JD Yachts



Image courtesy of JD Yachts



Image courtesy of JD Yachts



Image courtesy of JD Yachts



Image courtesy of JD Yachts

JD YACHTS LIMITED

80 THE ESPLANADE

DT4 7AA WEYMOUTH

United Kingdom (UK)

Phone: +44 (0) 1305 766504

<http://jdyachts.com>



 YACHTS.