



Highfield Sport 560

£41,995 • Brightlingsea United Kingdom (UK) • Used • 2025

Presented by
Peter Marchant
Phone: 44(0)1206302003
Morgan Marine
The Boatyard, Shipyard
Estate
CO7 0AR Colchester
United Kingdom (UK)

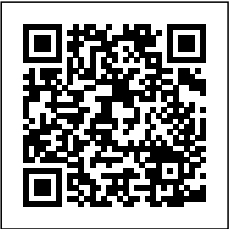


Details

Make:	Highfield
Model:	Sport 560
Year:	2025
Condition:	Used
Engine:	, 300 hp
Engine type:	
Fuel type:	Gasoline
Length:	5.86 m (19.23 ft)
Beam:	2.5 m (8.20 ft)
Cabins:	0
Berths:	0



Morgan Marine



7zea.com

Description

EN
2025 Highfield Sport 560 - Just in, this lightly used example is a standout example of performance, style, and practicality. Offering an excellent saving over new and powered by a Honda BF100 outboard with only approx 25 hours of use, this RIB delivers excellent performance and handling thanks to its expertly engineered aluminium hull. Despite its 5.6m size, the clever design provides the space and comfort you'd expect from a 6 or even 7-metre boat, with generous seating and storage throughout. Boasting a huge specification, including a Garmin 65cv chart plotter, Extreme 1300 Super roller trailer, VHF radio, Fusion audio system, console, swim platform, A-frame, aluminium T-top with fabric shade, sun deck, PVC tubes, overall mooring cover and striking black and grey EVA decking. The aluminium hull means there's no need to worry about gel coat chips, beaching, or trailering, giving you confidence and durability that will last for years to come. In our opinion, this is one of the finest Highfield Sport 560s available on the market. Contact Morgan Marine today to arrange an early viewing.

Cabin: N/A

Cockpit: SUS800 Console with forward cushioned seating. Bolster 800 bench style seating for pilot and co-pilot. A-frame. Aluminium T-Top with fabric top. Bow locker with bow cushion. Bow sundeck cushions. Integrated rear seat with backrest and grab handles. Pop up table. Cup holders.

Electronics: Garmin Echomap UHD2 65 - 6" chartplotter. Garmin VHF 115i radio. Garmin GT20-TM transducer. Fusion Apollo SRX400 with 2x XS sport 6.5" LED speakers. Switch panel. Automatic bilge pump. Navigation lights. Anchor light. Scanstrut USB socket. 12v socket. Isolator switch. Honda digital display gauge.

Machinery: Honda BF100 XRTU outboard with power trim and tilt and hydraulic steering system. Internal under-deck fuel tanks. Fuel capacity: 105L.

Trailer: Extreme EXT1300 super roller trailer with jockey wheel, winch and handle. NB - the road trailer may not be in serviceable road worthy condition. It is recommended the buyer should inspect and service accordingly prior to use on public roads.

General information

Make:	Highfield
Model:	Sport 560
Year:	2025
Condition:	Used

Engine

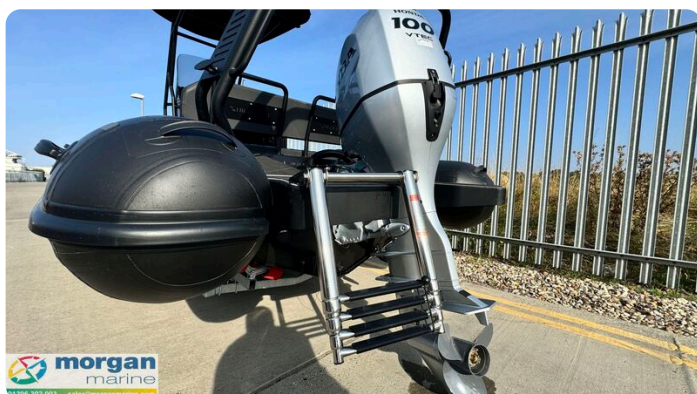
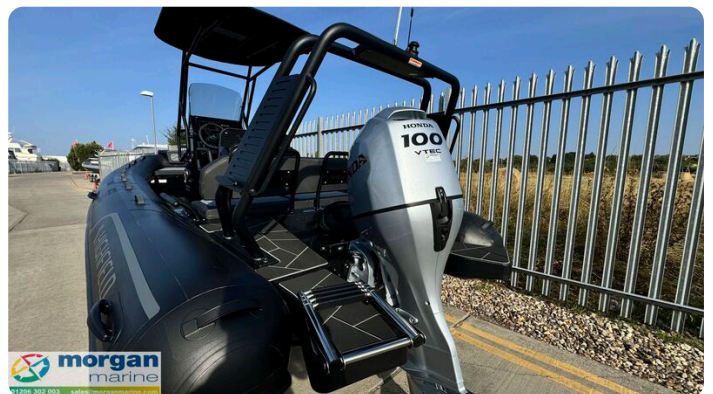
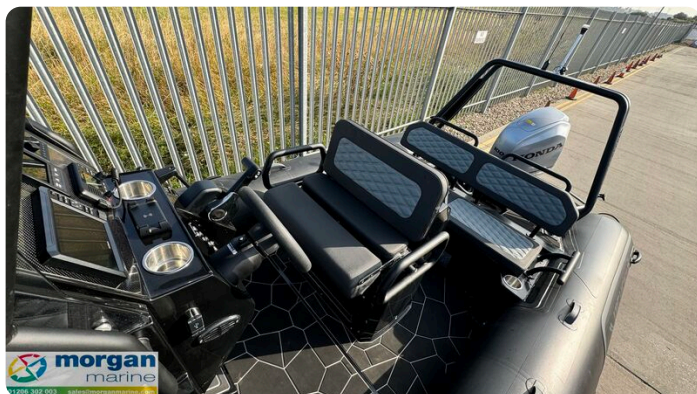
Engine:	, 300 hp
Engine type:	
Fuel type:	Gasoline

Measurements

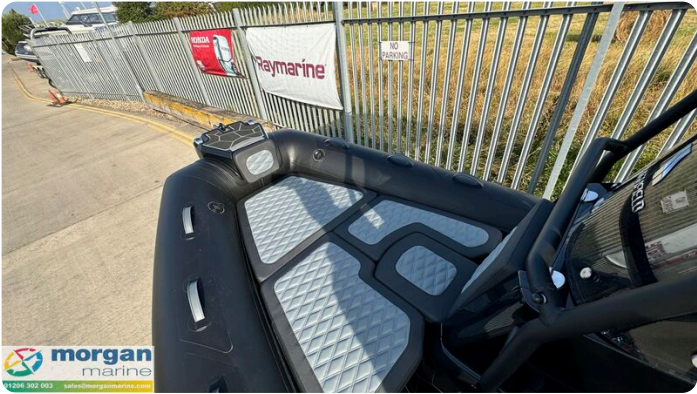
Length:	5.86 m (19.23 ft)
Beam:	2.5 m (8.20 ft)
Deep:	0 m (0.00 ft)

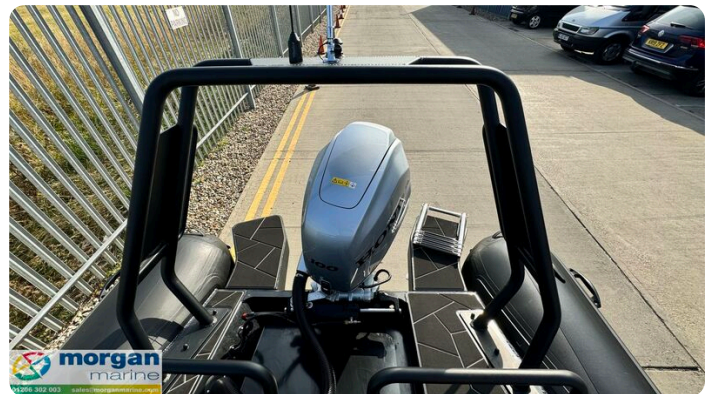
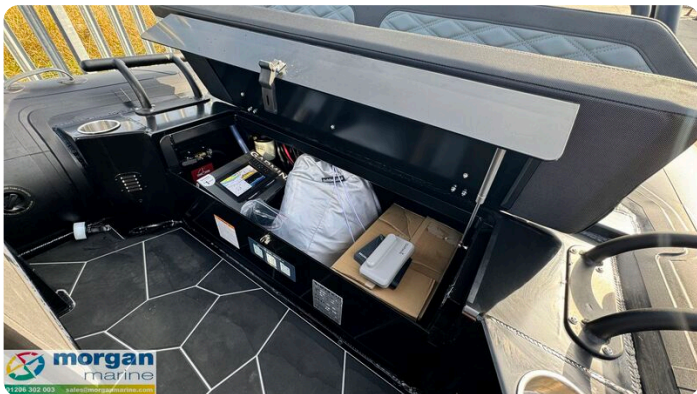
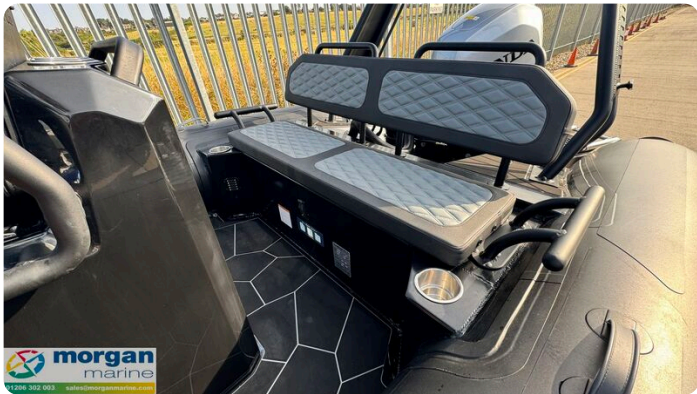
Accommodation

Cabins:	0
Berths:	0











Morgan Marine

The Boatyard, Shipyard Estate
CO7 0AR Colchester
United Kingdom (UK)

Phone: 44(0)1206302003

<https://morganmarine.com>

