



Humber 42 TSDY

£74,995 • Brightlingsea United Kingdom (UK) • Used • 2000

Presented by

Peter Marchant
Phone: 44(0)1206302003

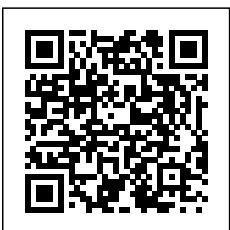
Morgan Marine

The Boatyard, Shipyard
Estate
CO7 0AR Colchester
United Kingdom (UK)

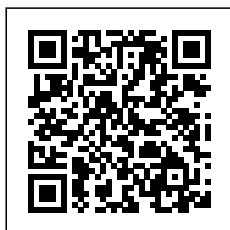


Details

Make:	Humber
Model:	42 TSDY
Year:	2000
Condition:	Used
Engine:	, 250 hp
Engine type:	
Length:	14.32 m (46.98 ft)
Beam:	4.26 m (13.98 ft)
Cabins:	0
Berths:	0



Morgan Marine



7zea.com

Description

EN

2000 Humber 42 TSDY just in at Morgan Marine powered by twin Sabre Perkins M300Ti 300hp diesel engines. This spacious three cabin cruiser is of a particularly high standard and is offered with a plethora of upgrades including diesel heating, Westerbeke 7KVA generator, a large array of Raytheon electronics, large cabins, 2x toilet compartments, and much more! This vessel is currently out of the water here with us Morgan Marine, and once re-commissioned will be ready to hit the water for the 2025 summer season. Early viewing is highly recommended!

Deck: White GRP superstructure. GRP integrated bathing platform with ladder. Heavy duty stainless steel bow roller with electric windlass, chain and rope (control from deck and at helms). Stainless steel mooring cleats. Fenders and lines. Davit dinghy arms. Teak on aft deck and GRP deck everywhere else. Custom built stainless steel pulpit, guard rails with boarding gates, Pushpit with Lexdan dodgers on aft deck. Access gate aft with custom building and bathing ladder on bathing platform. Teak laid surround anchor winch pulpit. Folding GRP radar arch. Stainless steel and Lexdan flybridge screen. Full set of covers. Custom made aft sun canopy. Flybridge, window and seat covers.

Cabin: Forward cabin with double berth, mirror, storage and lighting. Twin cabin with twin single berths, wardrobe and storage. Aft cabin with master stateroom centreline double berth with heads and shower to starboard, ample wardrobes and lockers. 2x toilet compartments both with electric fresh water toilet, 2x sinks, 2x showers and storage. Galley with Corian worktops, twin sinks, mixer tap, incorporated waste bin, grill, microwave, 3 burner ceramic hob, 120L fridge with tray freezer in fridge. Lots of cupboard storage. Saloon with emerald green Connolly hide leather seating with table. White leather ceiling with recessed lights.

Cockpit: Pilot bench style seating with dash, engine controls and wheel. Flybridge bench style seating with dash, engine controls and wheel. Flybridge back bench seating. Storage below seating on flybridge with reversible seat back. Heavy duty windscreen wipers. 2x aft deck seats / storage lockers with teak lids.

Electronics: Raytheon MARPA (mini auto radar). Raytheon GPS 120. Raytheon ST60 compass. Raytheon HSB 10 inch chartplotter / radar. Raytheon ST60 depth and speed display. Raytheon Autopilot 700. Ritchie compass. Icom DSC radio plus command to flybridge. Switch panel. 4x Engine batteries. 2x domestic batteries. Battery smart charger. Newmar 3-way battery charger. 2x Lucas alternators. Westerbeke 7KVA generator. Shore power. Electric automatic bilge pump. 12v lighting throughout.

Machinery: Twin Sabre Perkins M300Ti 300hp diesel engines. IRM 200A ZF hydraulic gearboxes. Morse single lever engine controls. Twin exhaust alert with temperature alarms. Fuel consumption 1-5GPH for both engines. 2x Bronze four bladed propellers with rope cutters. 2012 Suzuki 2.5hp auxiliary engine. Seastar hydraulic two station steering. Trim tabs in stainless steel with twin rams. Bow thruster. Engine fuel capacity - 908 litres in 2x alloy tanks. Water capacity - 363 in one tank. Eberspacher diesel heating.

General information

Make:	Humber
Model:	42 TSDY
Year:	2000
Condition:	Used

Engine

Engine:	, 250 hp
Engine type:	

Measurements

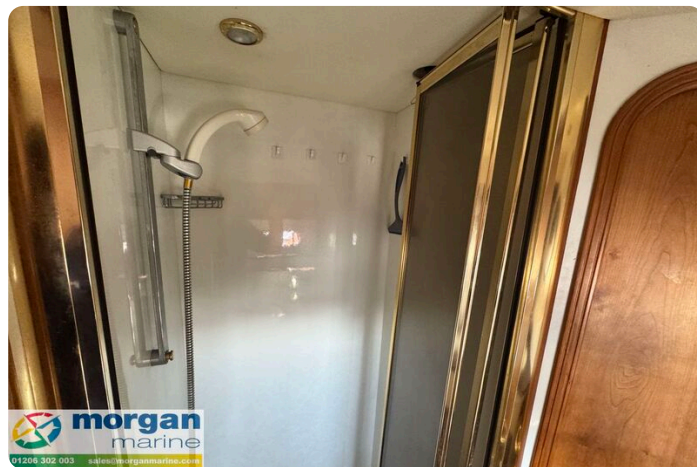
Length:	14.32 m (46.98 ft)
Beam:	4.26 m (13.98 ft)
Deep:	1.14 m (3.74 ft)
Weight:	0 ()

Accommodation

Cabins:	0
Berths:	0



Humber 42 - Main



Humber 42 TSDY - shower



Humber 42 TSDY - sink



Humber 42 TSDY - main berth



Humber 42 TSDY - door



Humber 42 TSDY - aft toilet



Humber 42 TSDY - AFT Berth



Humber 42 TSDY - aft mirror



Humber 42 TSDY - steps up



Humber 42 TSDY - steps down



Humber 42 TSDY - Saloon



Humber 42 TSDY - saloon stairs



Humber 42 TSDY - TV



Humber 42 TSDY - Saloon 2



Humber 42 TSDY - pilot seat



Humber 42 TSDY - plotter



Humber 42 TSDY - plotter



Humber 42 TSDY - dash



Humber 42 TSDY - bow thruster



Humber 42 TSDY - controls



Humber 42 TSDY - plotter



Humber 42 TSDY - galley



Humber 42 TSDY - sink



Humber 42 TSDY - fridge



Humber 42 TSDY - cooker



Humber 42 TSDY - isolators



Humber 42 TSDY - twin berths



Humber 42 TSDY - toilet 1



Humber 42 - props



Humber 42 - ladder



Humber 42 - decks



Humber 42 - deck



Humber 42 - doors



Humber 42 - aux



Humber 42 - fly



Humber 42 - fly seats



Humber 42 - flybridge



Humber 42 - gauges



Humber 42 - back



Humber 42 - side



Humber 42 - engines



Humber 42 - close up engines



Humber 42 - fly wheel



Humber 42 - fly controls



Humber 42 - railings



Humber 42 - fly plotter



Humber 42 - walk way



Humber 42 - windscreen



Humber 42 - fly covers



Humber 42 - anchor



Humber 42 - wipers



Humber 42 - wipers



Humber 42 - pilot seat



Humber 42 - bow



Humber 42 - fenders



Humber 42 - side view



Humber 42 - fenders



Humber 42 - back view



Humber 42 - fly seating



Humber 42 - seating



Humber 42 - top view



Humber 42 - top view



Humber 42 - side view

Morgan Marine

The Boatyard, Shipyard Estate
CO7 0AR Colchester
United Kingdom (UK)

Phone: 44(0)1206302003

<https://morganmarine.com>

