



# Intrepid 327 Center Console

US\$219,900 • Palm Beach Stati Uniti d'America • Usato • 2020

## Presentato da

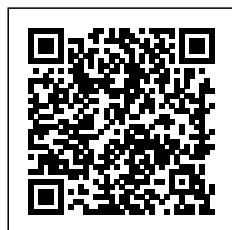


Phone: 1-561-612-7076

**Nautical Ventures**  
50 SOUTH BRYAN RD.  
FL 33004 DANIA BEACH  
Stati Uniti d'America



Nautical  
Ventures



7zea.com

## Dettagli

Costruttore:	Intrepid
Modello:	327 Center Console
Anno:	2020
Condizione:	Usato
Tipo di motore:	
Serbatoio di carburante:	1052.34 l (278.00 gal)
Lunghezza:	32 ft (9.75 m)
Larghezza:	9 ft (2.74 m)
Serbatoio d'acqua:	94.64 l (25.00 gal)

# Descrizione

## Available by Appointment: Palm Beach

This 2014 Intrepid 327 has sweet lines, is fast and fuel-efficient. She's been captain-maintained since new and it shows. The twin Yamaha 300 HP four-stroke outboards only has 748 hours and is the preferred package offering great performance, comfort, and stability, whether cruising with friends and family or chasing fish offshore.

The helm console features a double Garmin GPS one that is 16" and the other is 9", Fusion stereo system with JL speakers, ICOM VHF Radio, Simrad autopilot, MAXWELL Electric Windlass, Bennett digital trim tab Indicators with auto retract, Compass, stainless steel tilt steering wheel, Yamaha 6YC Display, instrumentation panel with switches, bow thruster, and with all the convenience of cup holders, glovebox and a windshield for protection from the wind and elements

Other features include Fiberglass T-Top, Yacht Tow Eye, console cover, hardtop with outriggers, hullside dive door, fold-down swim ladder, Vetus bow thruster, 110V charging system, freshwater washdown, saltwater washdown, solar panel trickle charger, and bow handrail.

### Engine 1

- Yamaha
- F300
- Outboard 4 Stroke
- 300.00 HP
- Gas/Petrol
- 748.00 Hours

### Engine 2

- Yamaha
- F300
- Outboard 4 Stroke
- 300.00 HP
- Gas/Petrol
- 748.00 Hours

### Selected features

- Yacht Tow Eye
- Console Cover
- Hard Top w/Outriggers
- Side Door
- Fusion MS-RA205 with JL Audio Speakers
- ICOM VHF IC-M506
- SIMRAD AP24 Auto Pilot
- MAXWELL Electric Windlass
- Vetus Bow Thruster
- Yamaha 6YC Display
- Garmin GPS 16"
- Garmin GPS 9"
- Bennett Trim Tabs
- 110V Charging System
- Fresh Water Wash Down
- Salt Water Wash Down
- Stainless Steel Tilt Steering Wheel
- Compass
- Solar Panel Trickle Charger

### Features

- 327 Bullet Console

- Transom Door
- Dive Platforms
- Tinned Wiring
- Navigation Lights
- Auto Bilge Pump
- Breaker Panel Switches
- Solid Stainless Steel Hardware
- Guttered Cockpit Hatches with Self Bailing Cockpit
- PVC Foam Core Vacuum-bagged Non-Woven Multi-Directional & Uni-Directional Fibers all Hand Laid
- Pull-up Deck, Springline & Stern Cleats
- Deck Storage/Rod Lockers Forward
- Console Windshield
- Integral Motor Bracket
- Insulated Fishbox with Thru Transom Ball Valve & Macerator
- Bow Eye
- Non-Skid Deck & Gunwales
- Aluminum Fuel Tank
- Heavy Duty Vinyl Rubrail
- Recessed Battery Switch Panel
- Trim Tabs
- Dry Lockable Storage Compartment Forward
- Anchor Roller Thru Bow
- Plexi Trim Package
- Compass
- Fold Down Swim Ladder
- Bow Handrail

## Informazione generale

Costruttore:	Intrepid
Modello:	327 Center Console
Anno:	2020
Condizione:	Usato

## Motore

Tipo di motore:	
Serbatoio di carburante:	1052.34 l (278.00 gal)

## Misure

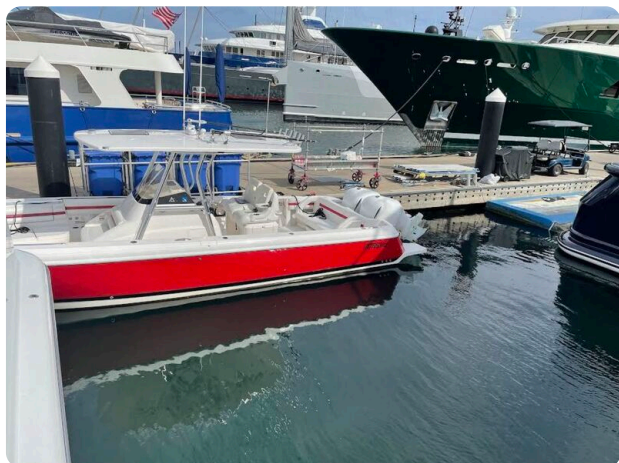
Lunghezza:	32 ft (9.75 m)
Larghezza:	9 ft (2.74 m)

## Alloggio

Serbatoio d'acqua: 94.64 l (25.00 gal)

## Immagini

---





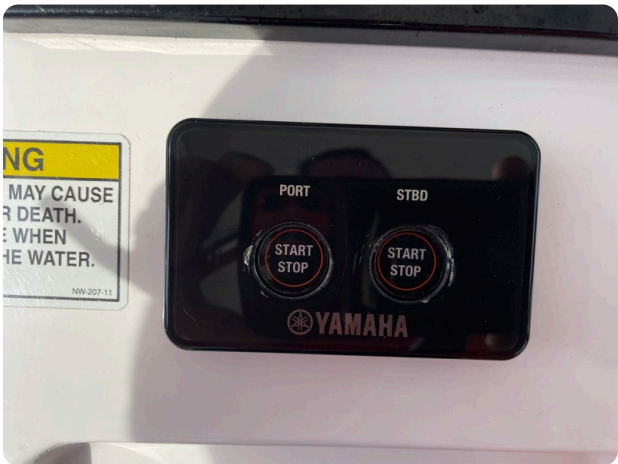
























**Nautical Ventures**  
50 SOUTH BRYAN RD.  
FL 33004 DANIA BEACH  
Stati Uniti d'America  
Telefono: 1-561-612-7076  
<https://www.nauticalventures.com>

