



Intrepid 327 Center Console

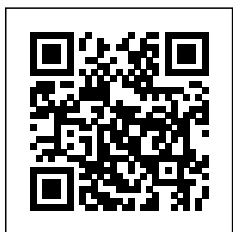
US\$219,900 • Palm Beach United States of America (USA) • Used • 2020

Presented by

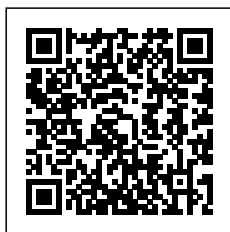


Phone: 1-561-612-7076

Nautical Ventures
50 SOUTH BRYAN RD.
FL 33004 DANIA BEACH
United States of America
(USA)



Nautical
Ventures



7zea.com

Details

Make:	Intrepid
Model:	327 Center Console
Year:	2020
Condition:	Used
Engine type:	
Fuel tank:	1052.34 l (278.00 gal)
Length:	32 ft (9.75 m)
Beam:	9 ft (2.74 m)
Watertank:	94.64 l (25.00 gal)

Description

Available by Appointment: Palm Beach

This 2014 Intrepid 327 has sweet lines, is fast and fuel-efficient. She's been captain-maintained since new and it shows. The twin Yamaha 300 HP four-stroke outboards only has 748 hours and is the preferred package offering great performance, comfort, and stability, whether cruising with friends and family or chasing fish offshore.

The helm console features a double Garmin GPS one that is 16" and the other is 9", Fusion stereo system with JL speakers, ICOM VHF Radio, Simrad autopilot, MAXWELL Electric Windlass, Bennett digital trim tab Indicators with auto retract, Compass, stainless steel tilt steering wheel, Yamaha 6YC Display, instrumentation panel with switches, bow thruster, and with all the convenience of cup holders, glovebox and a windshield for protection from the wind and elements

Other features include Fiberglass T-Top, Yacht Tow Eye, console cover, hardtop with outriggers, hullside dive door, fold-down swim ladder, Vetus bow thruster, 110V charging system, freshwater washdown, saltwater washdown, solar panel trickle charger, and bow handrail.

Engine 1

- Yamaha
- F300
- Outboard 4 Stroke
- 300.00 HP
- Gas/Petrol
- 748.00 Hours

Engine 2

- Yamaha
- F300
- Outboard 4 Stroke
- 300.00 HP
- Gas/Petrol
- 748.00 Hours

Selected features

- Yacht Tow Eye
- Console Cover
- Hard Top w/Outriggers
- Side Door
- Fusion MS-RA205 with JL Audio Speakers
- ICOM VHF IC-M506
- SIMRAD AP24 Auto Pilot
- MAXWELL Electric Windlass
- Vetus Bow Thruster
- Yamaha 6YC Display
- Garmin GPS 16"
- Garmin GPS 9"
- Bennett Trim Tabs
- 110V Charging System
- Fresh Water Wash Down
- Salt Water Wash Down
- Stainless Steel Tilt Steering Wheel
- Compass
- Solar Panel Trickle Charger

Features

- 327 Bullet Console

- Transom Door
- Dive Platforms
- Tinned Wiring
- Navigation Lights
- Auto Bilge Pump
- Breaker Panel Switches
- Solid Stainless Steel Hardware
- Guttered Cockpit Hatches with Self Bailing Cockpit
- PVC Foam Core Vacuum-bagged Non-Woven Multi-Directional & Uni-Directional Fibers all Hand Laid
- Pull-up Deck, Springline & Stern Cleats
- Deck Storage/Rod Lockers Forward
- Console Windshield
- Integral Motor Bracket
- Insulated Fishbox with Thru Transom Ball Valve & Macerator
- Bow Eye
- Non-Skid Deck & Gunwales
- Aluminum Fuel Tank
- Heavy Duty Vinyl Rubrail
- Recessed Battery Switch Panel
- Trim Tabs
- Dry Lockable Storage Compartment Forward
- Anchor Roller Thru Bow
- Plexi Trim Package
- Compass
- Fold Down Swim Ladder
- Bow Handrail

Listing MLS by [Yachtr.com](https://www.yachtr.com)

General information

Make:	Intrepid
Model:	327 Center Console
Year:	2020
Condition:	Used

Engine

Engine type:	
Fuel tank:	1052.34 l (278.00 gal)

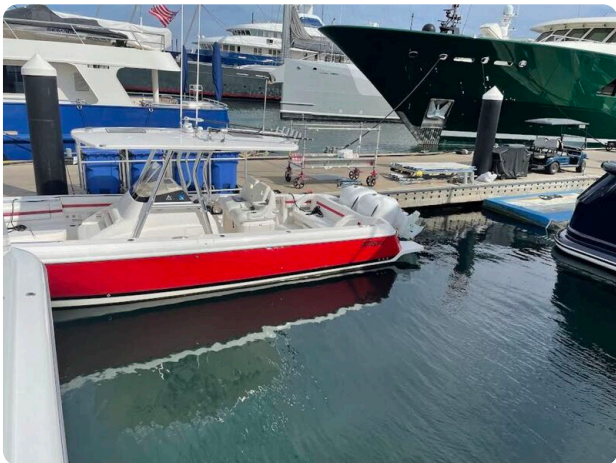
Measurements

Length:	32 ft (9.75 m)
Beam:	9 ft (2.74 m)

Accommodation

Watertank: 94.64 l (25.00 gal)

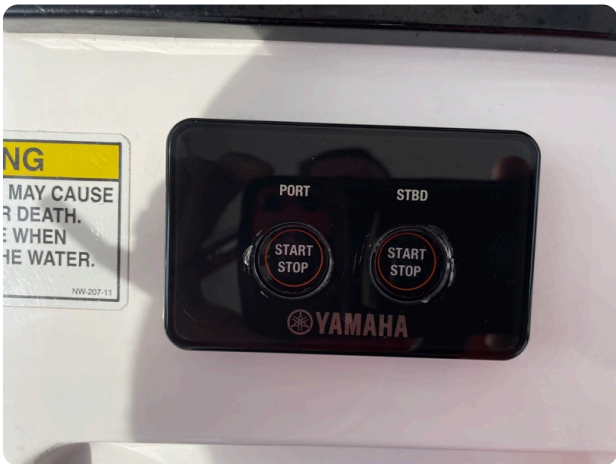
Images

















Nautical Ventures
50 SOUTH BRYAN RD.
FL 33004 DANIA BEACH
United States of America (USA)
Phone: 1-561-612-7076
<https://www.nauticalventures.com>

