



Jeanneau Merry Fisher 795 Sport - Series 2

£114,995 • Brightlingsea Regno Unito • Nuovo • 2024

Presentato da

Peter Marchant
Phone: 44(0)1206302003

Morgan Marine

The Boatyard, Shipyard
Estate
CO7 0AR Colchester
Regno Unito



Dettagli

| | |
|---------------------|-----------------------------------|
| Costruttore: | Jeanneau |
| Modello: | Merry Fisher 795 Sport - Series 2 |
| Anno: | 2024 |
| Condizione: | Nuovo |
| Motore: | , 435 hp |
| Tipo di motore: | |
| Tipo di carburante: | Gasolio |
| Lunghezza: | 8.14 m (26.71 ft) |
| Larghezza: | 2.82 m (9.25 ft) |
| Cabine: | 0 |
| Ancoraggi: | 0 |



Morgan Marine



7zea.com

Descrizione

EN

Jeanneau Merry Fisher 795 Sport -Series 2 - with Honda Honda BF200 DXDU outboard - Drive By Wire and bow thruster - for great performance and easy manoeuvrability. Over £37,000 extras including Trim Level Premiere, marine toilet, Garmin navigation electronics + Fusion audio, windlass, aft bench cushions and forward cockpit cushions. CE category C for 9. Full PDI / commissioning / installation and hand over package + prepared and antifouled. This 2024 model Jeanneau Merry Fisher 795 Sport is on order with the factory and will arrive at Morgan Marine soon. NB - library photos may not reflect specification of boat.

Deck: Electric windlass (with control from helm position) + self draining anchor locker + bow roller + anchor and chain. 2x forward chocks + 2x forward + 2x middle + 2x aft mooring cleats. Open front pulpits + cockpit side pulpits + aft cockpit handrails + handrails. Walk around side decks to deep bow. Removable aft cockpit bench + backrest (GRP box + cushion) + port & starboard luxury folding side benches with cushions - all convert to sunpad. Removable aft cockpit table. 3x cockpit deck lockers. Swim platform with ladder + cockpit barrier. Cockpit side gate for easy access onto mooring. Fishing rod holders. Live bait tank (without oxygenation) + fish cutting table - to aft. Fishing kit: fish box for cockpit locker and 2 additional rod holders on the stern. Cockpit shower.

Cabin: Forward cabin with double berth, opening porthole, hatch to deck, shelves and overhead light. Separate compartment with marine toilet + sink and opening porthole. Wheelhouse interior curtains.

Cockpit: Wheelhouse with aft window (instead of aft door - allowing for bench behind), inverted windscreen (the top is further forward than the bottom) - with port and starboard windscreen wipers + screen wash, roof hatch, plus port and starboard side doors. Helm position with full engine controls, electronics and compass. Pilot bolster seat + co-pilot bench - lockers under seats. Galley behind helm position - sink (pressurised fresh water), 40L fridge and space for removable gas stove. Fabric upholstery in saloon. Storage rack on the roof for Stand Up Paddle board. Cushions in front cockpit.

Electronics: Garmin Electronic Pack: Garmin echoMAP UHD2 92sv touch and GT23M-TM transducer. Fusion Audio Pack: Fusion RA70N + bluetooth, USB plug, 2x loudspeakers. Overhead lights in wheelhouse and cabin. Navigation lights. 220v shore power socket + battery charger + lead.

Machinery: Honda BF200 DXDU - Drive By Wire. Upgrade to Honda 250hp DBW for only £3,500 extra. Hydraulic steering. Manual and electric bilge pumps. Pressured fresh water system, water tank, cockpit shower, tap in galley, tap in toilet compartment. Fuel capacity: 280L (with outside fill). Water capacity: 100L.

Informazione generale

| | |
|--------------|-----------------------------------|
| Costruttore: | Jeanneau |
| Modello: | Merry Fisher 795 Sport - Series 2 |
| Anno: | 2024 |
| Condizione: | Nuovo |

Motore

| | |
|---------------------|----------|
| Motore: | , 435 hp |
| Tipo di motore: | |
| Tipo di carburante: | Gasolio |

Misure

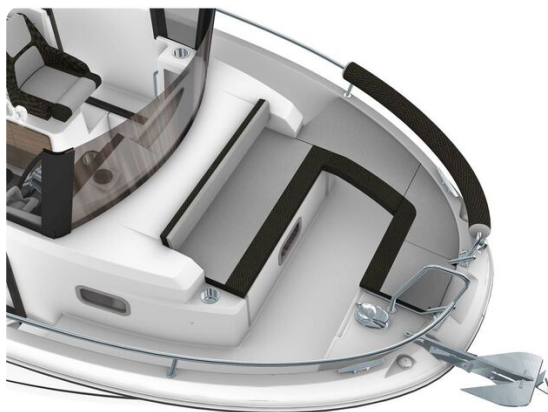
| | |
|------------|-------------------|
| Lunghezza: | 8.14 m (26.71 ft) |
| Larghezza: | 2.82 m (9.25 ft) |
| Profondo: | 0.58 m (1.90 ft) |
| Peso: | 0 () |

Alloggio

| | |
|------------|---|
| Cabine: | 0 |
| Ancoraggi: | 0 |



Jeanneau Merry Fisher 795 Sport - Series 2



Jeanneau Merry Fisher 795 Sport - Series 2 - cushioned bow seating



Jeanneau Merry Fisher 795 Sport - Series 2 - render of overhead view



Jeanneau Merry Fisher 795 Sport - Series 2 - toilet compartment



Jeanneau Merry Fisher 795 Sport - Series 2 - forward cuddy with cushions



Jeanneau Merry Fisher 795 Sport - Series 2 - galley behind helm seat



Jeanneau Merry Fisher 795 Sport - Series 2 - moving through the water



Jeanneau Merry Fisher 795 Sport - Series 2 - great for paddleboards and fun on the water



Jeanneau Merry Fisher 795 Sport - Series 2 - on the water



Jeanneau Merry Fisher 795 Sport - Series 2 - overhead view of starboard on the water



Jeanneau Merry Fisher 795 Sport - Series 2 - aft cockpit table and seating

Morgan Marine

The Boatyard, Shipyard Estate
CO7 0AR Colchester
Regno Unito

Telefono: 44(0)1206302003

<https://morganmarine.com>

