



Kingfisher 26

£995 • Brightlingsea Regno Unito • Usato • 1969

Presentato da

Peter Marchant
Phone: 44(0)1206302003

Morgan Marine

The Boatyard, Shipyard
Estate
CO7 0AR Colchester
Regno Unito



Dettagli

| | |
|---------------------|-------------------|
| Costruttore: | Kingfisher |
| Modello: | 26 |
| Anno: | 1969 |
| Condizione: | Usato |
| Motore: | , 435 hp |
| Tipo di motore: | |
| Tipo di carburante: | Carburante diesel |
| Lunghezza: | 7.9 m (25.92 ft) |
| Larghezza: | 2.3 m (7.55 ft) |
| Cabine: | 0 |
| Ancoraggi: | 0 |



Morgan Marine



7zea.com

Descrizione

EN

Kingfisher 26 Pharmacia - project boat. Built in 1969, GRP construction with grey topsides, twin bilge keels, self draining aft cockpit with tiller steering. It has a masthead Bermudad sloop rig, and her interior has 4 berths in 2 cabins with around 6ft headroom. This is a project boat for the right Buyer. The cabin requires attention as there is some rain water damage, but for this price we believe Pharmacia to be a great buy. Viewing highly recommended - full paperwork of boat can be seen. Why not contact Morgan Marine to talk further about this Bargain Bilge Keeler.

Deck: Stainless steel Pushpit, pulpit and guard wires. Tiller steering. Cleats. Bow roller. Rigging requires attention.

Cabin: 4 berths in 2 cabins including 6ft V shaped berths in the separate forebrain. Port and starboard side storage. 2x Berths in saloon.

Cockpit: Bench style seating. Storage under bench seating. Tiller steering. Considerable cockpit space for both captain and crew.

Electronics: N/A

Machinery: Kubota 17hp 3 cylinder inboard diesel engine (new in 1985 and rebuilt in 1996). 30 Gallon fuel capacity in 2x tanks. Running conditions can not be confirmed.

Informazione generale

| | |
|--------------|------------|
| Costruttore: | Kingfisher |
| Modello: | 26 |
| Anno: | 1969 |
| Condizione: | Usato |

Motore

| | |
|---------------------|-------------------|
| Motore: | , 435 hp |
| Tipo di motore: | |
| Tipo di carburante: | Carburante diesel |

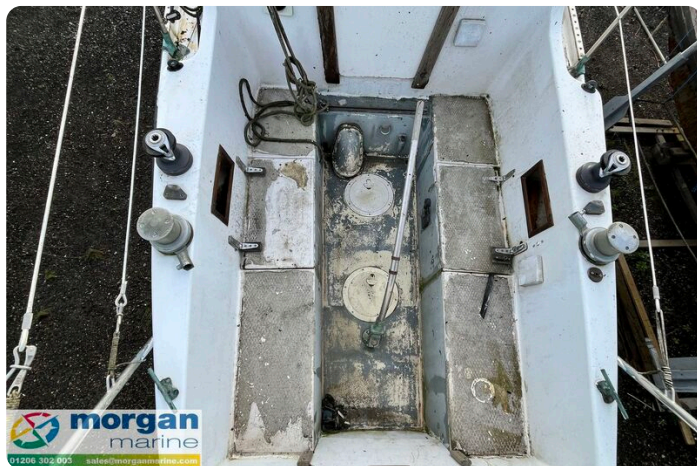
Misure

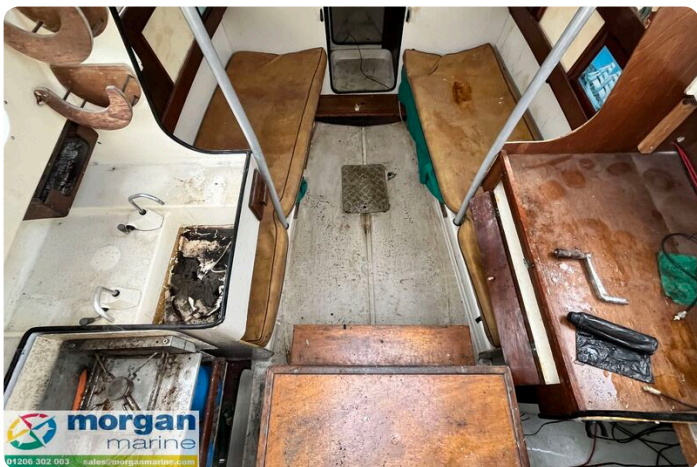
| | |
|------------|------------------|
| Lunghezza: | 7.9 m (25.92 ft) |
| Larghezza: | 2.3 m (7.55 ft) |
| Profondo: | 0.9 m (2.95 ft) |
| Peso: | 0 () |

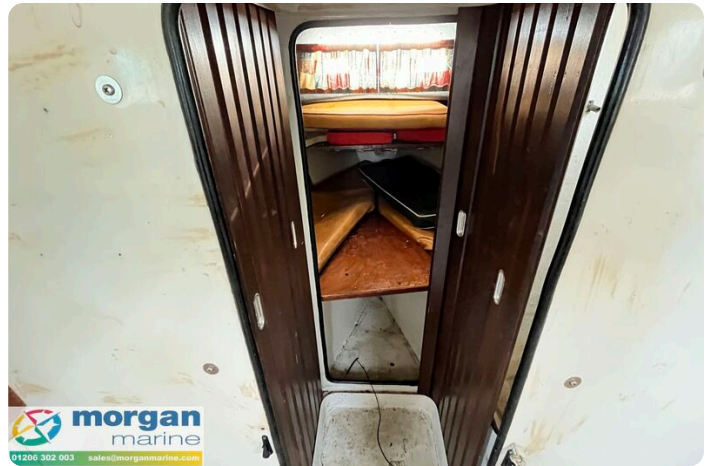
Alloggio

| | |
|------------|---|
| Cabine: | 0 |
| Ancoraggi: | 0 |

Immagini









Morgan Marine

The Boatyard, Shipyard Estate
CO7 0AR Colchester
Regno Unito

Telefono: 44(0)1206302003

<https://morganmarine.com>

