



Princess V53

€399,000 • Wanssum Netherlands • Used • 2007

Presented by

Bram de Groot
Phone: 0031(0)478450015

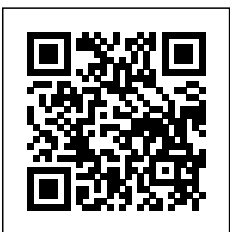
GrandYachts BV

Geijsterseweg 10
5861 BL Wanssum
Netherlands

GRANDYACHTS®

Details

Make:	Princess
Model:	V53
Year:	2007
Condition:	Used
Hull:	Fiberglass
Engine:	Volvo Penta D12-800 2007
Engine type:	Inboard engine
Fuel type:	Diesel
Fuel tank:	2210 l (583.82 gal)
Length:	16.36 m (53.67 ft)
Beam:	4.47 m (14.67 ft)
Cabins:	0
Berths:	3
Watertank:	436 l (115.18 gal)



GrandYachts BV



7zea.com

Description

Presentation Princesses hard top V series model range offers serious performance together with a luxurious interior and sleek exteriors but always keeping the conservative Princess look to the overall package. This **Princess V53 HT** is an integrated hardtop only model, with a sunroof opening in a few seconds to the sun or closing for the shade or rain protection.

Accommodation The accommodation for the Princess V53 is all about spacious spaces giving in all this more than one would imagine in a sixteen metre size. What you will like and not find on other open hard top boats is the c-shaped settee to fore port side on the cockpit deck. Other valid points is the spacious salon settee with galley opposite feeling ultra large. The aft deck welcomes you on board with a spacious sun lounger, housing under it a well sized tender garage. Going more to fore you find a spacious c-shaped settee, with wet bar opposite, the much appreciated six person c-shaped settee to port, and a dual seated helm station to starboard.

Below deck is the three double cabins along with the galley and salon. An area which is very spacious is surely the galley and salon. The three cabins have all a different plan and layout, with the smaller third bunk cabin very beloved by children but still feeling more spacious to what it actually is. The cabins are located in this manner, double owners with en suite to fore, twin single berth to starboard midships, third cabin with bunks to port, and a guest or day head.

Performance The engine options for the V53 are all Volvo D12 engines starting from smaller 675hp, more performing 715hp units, and the bigger D12-800 775hp. This V53 has of course the biggest option with her very reliable **twin D12-800's** which gives you a wide open throttle of some stunning 37 knots. Princess continue with the tried and tested Bernard Olesinski modified vee hull, now used for over two decades by the British builder. Olesinski's hull are all about a deep vee entrance forward section and a moderate dead rise aft of eighteen degrees. Princess also used mold tunnel propellers for reduced shaft angle and cleaner propeller water stream. Propeller pockets give a performance advantage over traditional shaft method although a perfect engine position and weight distribution is also important in order not to have the effect of a high bow ride with a lot of dragging aft.

Positive

A whole lot of pure craftsmanship.

Conclusion Since the eighties Princess have always given attention to open type Sport Cruisers, but somehow the Riviera series always left them behind versus the other British builders. Come the nineties and the integrated windshield V series Princess's manages the unthinkable becoming among the most desired for a British built Mediterranean open type sport yacht. Sitting in the middle of the current ten model V series line up, the V53 is one of the latest designs putting a great looking integrated hard top, with the usual integrity associated with the British marque. Three design solutions set the V53 apart, which are the six person dinning settee on the main deck, spacious galley for the size, and good performance with not so big engines. The Princess V53 also feels bigger to its actual size which is never a bad thing when you are on the water, and everything is seen small.

Engines, gen-set, gearbox, hydraulics and controls:

- Twin Volvo D12-800 (2 x 775hp) Speed range: 34-37 knots

- 1200 hours
- 2 x 4 Blade Aquafoil nickel-alu-bronze propellers
- ZF extra duty gearboxes
- Bow thruster
- Stern thruster
- New Bow/Stern remote controller
- New Webasto heating with WiFi controller
- 1 x Kohler generator with muffler (super silent!!!)
- 1 x Double electronic MicroCommander
- Pressurised hydraulic steering
- Opacmare hydraulic gangway
- Opacmare hydraulic garage hatch
- Bennet hydraulic trim-tabs
- Raymarine electro hydraulic steering pump

Specifications:

- Length: 16.36m
- Length on deck: 16.12m
- Beam: 4.47m
- Draft: 1.09m
- Fuel: 2210 Litres
- Water: 436 Litres + boiler
- Black: 195 Litres
- Cruising: 24 knots
- Maximum: 33 knots

Lay-out:

- Cabins: 3
- Berth: 6
- Bathrooms: 2
- Toilet: 2
- Master stateroom over her full beam in bow
- Master bathroom with separate shower ensuite
- Guestroom on starboard and port
- Guestroom bathroom ensuite
- Large salon
- Large galley with all facilities

General:

- Full teak deck version!!
- LED HD TV
- Bose sound systems
- Creme leather upholstery
- Electric anchor winch
- Bow thruster
- Stern thruster
- Trim tabs
- Compass
- Bar in salon
- Isotherm stainless water heater
- Water pressure accumulator
- Extra duty Jabsco water pump
- LED water-level indicator
- Swimming ladder
- Cockpit cover
- Bimini top

Salon:

- Large salon with U-shaped settee
- Liquor cabinet
- Tinted mirror wall
- Stereo (usb/mp3)system
- Safety hatch
- Overhead and concealed lighting
- 230 VAC outlets
- Cupboards
- 4 x Stainless portholes

Galley:

- Tri zone HOB
- Combi oven-grill-microwave
- Stainless sink with mixer tap
- Fridge and freezer extra large
- Composite worktop
- Waste disposal bin
- Overhead and concealed lighting
- 230 VAC outlets
- span cabinets
- cutlery drawer
- glass cabinet
- china cabinets
- 2 x Stainless porthole
- Fire extinguisher

Master stateroom:

- French double bed
- Viva guard bed-border
- Mirrored headboard
- Reading lights
- Overhead and concealed lighting
- 230 VAC outlets
- 2 x stainless portholes
- half open cupboards
- lay wardrobe
- hang wardrobe
- drawer under bed
- Make up table
- Fire extinguisher

Guestroom:

- Twin bed layout with pedestal cupboard
- Overhead and concealed lighting
- 230 VAC outlets
- 2 x stainless portholes
- lay wardrobe
- hang wardrobe
- Fire extinguisher

Cockpit / Electronics:

- Raymarine chartplotter
- Raymarine echosounder
- Raymarine speedometer
- Raymarine VHF
- Raymarine autopilot
- Raymarine radar
- Searchlight with remote on helm
- Plastimo offshore 100 compass
- Plexiglass chart table
- Hydraulic trim-tabs
- Kohler genset remote
- Radar reflector
- Horn
- Glomex TV antenna
- Window wipers
- Flatpanel LED lights in radar arch
- Cockpit speakers
- Cockpit bar with sink, mixer tap, fridge, storage and cutting board
- Cockpit shower with mixer tap
- Swimming ladder
- Fender storage

Engine room:

- Engine room lights
- Emergency starter system
- Electric fuel cut-off valves
- Battery box
- Automatic fire extinguishing system
- 2 x Separ over-duty fuel filters/water separators.

- Automatic bilge pump

Manufacturer Provided Description

With the latest deep V hull the Princess V53 combines outstanding performance and seakeeping with elegance and style. Propeller tunnel, chine and spray rail design all incorporate the most recent advances to give comfortable and very efficient operation at high speeds. Add to this a generous fuel capacity and you have a performance sports yacht with an extended range and fast cruising capability. Below, design intelligence and ingenuity provide spacious and comfortable accommodation with a three-cabin layout, a fully equipped galley and a stylish saloon featuring a large L-shaped sofa and dining area with an extending table and an LCD TV/DVD inset to the bar. On deck the large teak-laid cockpit comprises two generous seating areas and a wetbar with electric barbecue and top loading cool box, while the aft deck accommodates a triple sunbed and garage for a tender or wetbike. The control position incorporates twin sports seats, full engine instrumentation and an integrated navigation system with autopilot linked to the GPS/chart plotter, while electronic engine controls, a bow thruster and power-assisted steering make close quarter handling safe and straightforward. Overhead the folding hood can be set up as completely open, as a bimini, or fully enclosed. Alternatively there is the option of an electrically powered retractable hardtop. With stunning performance and dynamic good looks, the V53 is the ultimate boat for those who wish to experience the thrill of high-speed cruising in comfort and style.

- Self-draining
- U-shaped seating/dining area
- Cockpit lighting
- Cockpit hood and tonneau cover
- Stainless-steel grabrails
- Optional hydraulic/ telescopic passerelle
- Cockpit wet bar with refrigerated top loading cool box and electric barbecue
- Sunbed aft
- Dinghy stowage garage beneath sunbed, with hydraulic lift system and electric winch for recovery of tender
- Loudspeakers linked to saloon hi-fi system
- Access hatch to lazarette stowage space with gas strut support
- Access hatch to engine room with gas strut support
- Fender stowage
- Life raft storage
- 220/240v shore support inlet in locker
- Stowage lockers
- Radar arch
- Transom door leading to integral bathing platform
- Transom bathing platform with foldaway swimming ladder
- Hot and cold shower
- Optional hardtop with electrically operated sliding GRP roof

Saloon

- L-shaped sofa
- Stools (2)
- Cocktail cabinet
- Stereo CD/DVD/radio with saloon and cockpit speakers
- LCD TV
- Overhead downlighters
- Main electrical control panel with freshwater gauge
- Opening deck hatch
- Sliding door to cockpit
- Storage lockers

Accommodation

- All cabins are fitted with portholes and 240v power points
- All bathrooms feature electric quietflush toilets, opening portholes and 240v shaver points
- Avonite (or similar) worktop 3-zone ceramic hob
- Combination microwave/ conventional oven with grill
- Stainless steel sink with
- Monobloc mixer tap
- Large refrigerator with deep-freeze compartment
- Storage cupboards, drawers and lockers
- Waste bin
- Space for optional icemaker
- Space for optional dishwasher
- Under floor storage bin
- Avonite (or similar) worktop 3-zone ceramic hob
- Combination microwave/ conventional oven with grill
- Stainless steel sink with
- Monobloc mixer tap
- Large refrigerator with deep-freeze compartment
- Storage cupboards, drawers and lockers
- Waste bin
- Space for optional icemaker
- Space for optional dishwasher
- Under floor storage bin
- Automatic/manual override fire extinguisher in engine room and generator space
- Hand-operated fire extinguishers (5) in owner's stateroom
- guest cabins
- galley
- cockpit
- Automatic electric bilge pumps (with manual override) in: engine room forward accommodation aft lazarette (6 in all)
- High-capacity manual bilge pump with valve system and suction points in same areas
- 4-bladed propellers in nickel aluminium bronze
- Bow thruster (95kgf)
- Engine room lighting
- Cockpit sole engine room access hatch with gas strut support
- Power-assisted hydraulic steering
- Trim tabs with indicators
- Electronic engine controls
- Engine room extractor fans with electronic time delay
- Teak-laid transom platform, cockpit deck and stairs to side decks
- Reversible electric anchor winch with foredeck and helm position controls
- Self-stowing 25kg Delta anchor with 40m of chain
- Stemhead roller with automatic anchor launch and retrieve
- Bow rope storage locker
- Stainless-steel bow, stern and spring cleats
- Stainless-steel pulpit and guardrails
- Stainless-steel coachroof handrails
- Forecabin hatch
- Saloon hatch
- Stainless-steel rubbing band
- Full set of IMCO navigation lights
- Riding light
- Remote control searchlight
- Twin electric horns
- Fuel and water fillers
- Double helm seat with sit/ stand facility
- U-shaped sofa opposite helm position
- Electric drop windows port and starboard
- Burr instrument panel
- Full engine instrumentation
- Fuel gauges
- Electronic engine controls
- Power-assisted hydraulic steering
- Rudder position indicator
- Anchor winch remote control

- Trim tab controls with indicators
- Horn button
- Autopilot
- Colour chartplotter/GPS (interfaced)
- High-speed compass
- Speed and distance log
- Echo sounder with alarm
- VHF with DSC R/T
- Remote control searchlight
- Chart table
- Twin windscreen wipers
- Windscreen freshwater pressure wash
- Bilge pump controls with visual pump running? indicators
- Fuel contamination warning lights
- **Twin Volvo D12-800 (2 x 775hp) Speed range: 34-37 knots**

Disclaimer

GrandYachts offers the details of this vessel in good faith but cannot guarantee or warrant the accuracy of this information nor warrant the condition of the vessel. A buyer should instruct his agents, or his surveyors, to investigate such details as the buyer desires validated. This vessel is offered subject to prior sale, price change, or withdrawal without notice.

General information

Make:	Princess
Model:	V53
Year:	2007
Condition:	Used
Hull:	Fiberglass

Engine

Engine:	Volvo Penta D12-800 2007
Engine type:	Inboard engine
Fuel type:	Diesel
Fuel tank:	2210 l (583.82 gal)

Measurements

Length:	16.36 m (53.67 ft)
Beam:	4.47 m (14.67 ft)
Deep:	1.09 m (3.58 ft)

Accommodation

Cabins:	0
Berths:	3
Watertank:	436 l (115.18 gal)
Holdingtank:	195 l (51.51 gal)

Images



Princess V53



Princess V53



Princess V53



Princess V53



Princess V53



Princess V53



Princess V53



Princess V53



Princess V53



Princess V53



Princess V53



Princess V53



Princess V53



Princess V53



Princess V53



Princess V53



Princess V53



Princess V53



Princess V53



Princess V53



Princess V53



Princess V53



Princess V53



Princess V53



Princess V53



Princess V53



Princess V53



Princess V53



Princess V53



Princess V53



Princess V53



Princess V53



Princess V53



Princess V53



Princess V53



Princess V53



Princess V53



Princess V53



Princess V53



Princess V53



Princess V53



Princess V53



Princess V53



Princess V53



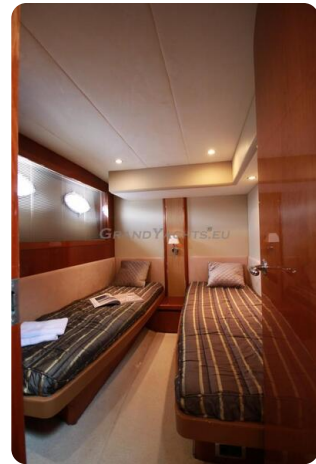
Princess V53



Princess V53



Princess V53



Princess V53



Princess V53



Princess V53



Princess V53



Princess V53



Princess V53



Princess V53



Princess V53



Princess V53



Princess V53



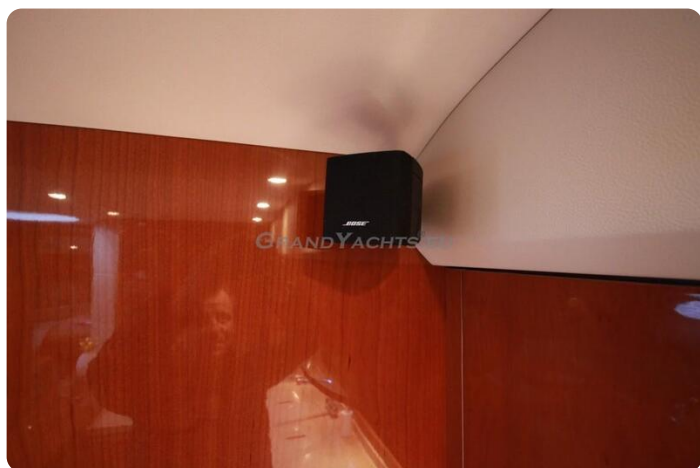
Princess V53



Princess V53



Princess V53



Princess V53



Princess V53



Princess V53



Princess V53



Princess V53



Princess V53



Princess V53



Princess V53



Princess V53



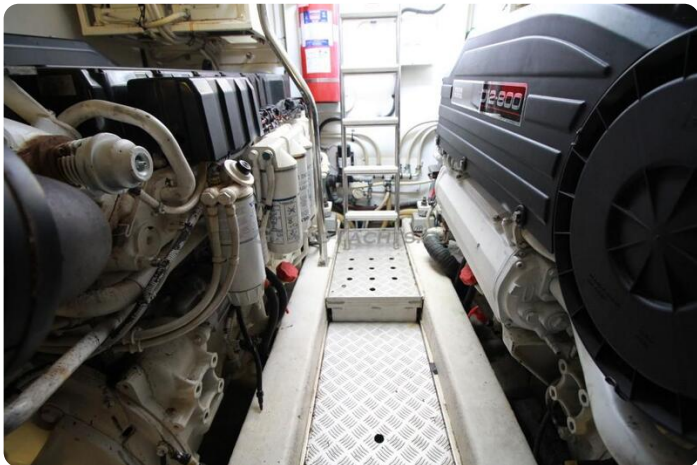
Princess V53



Princess V53



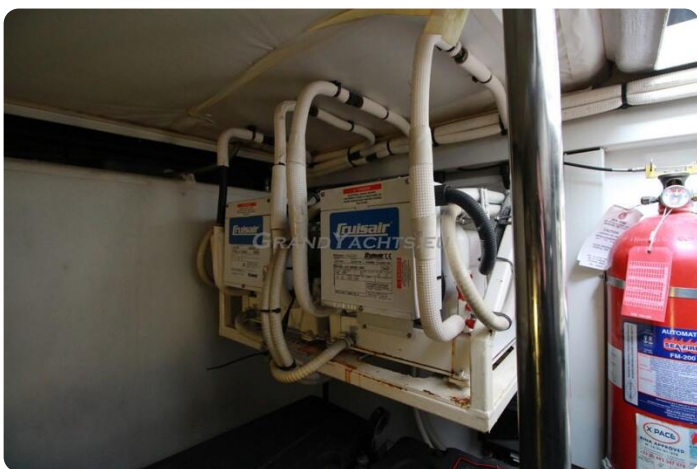
Princess V53



Princess V53



Princess V53



Princess V53



Princess V53

GrandYachts BV

Geijsterseweg 10
5861 BL Wanssum
Netherlands

Phone: 0031(0)478450015

<https://grandyachts.eu>



GRANDYACHTS®