

RODMAN Catamaran Passenger Ship 248 Pax RODMAN 115

€4,200,000 • Antwerp Belgium • Used • 2023

Presented by

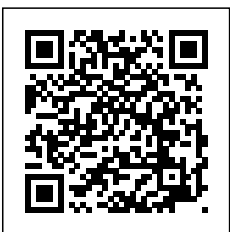
Olivier Haroche
Phone: +34 637 510 716

Barcelona Yachting
Port Olimpic - Local 14
08005 Barcelona
Spain



Details

Make:	RODMAN
Model:	Catamaran Passenger Ship 248 Pax RODMAN 115
Year:	2023
Condition:	Used
Engine:	MAN D2868LE443 900 CV - 16.16l 8 cylinders, 900 hp
Engine type:	
Fuel type:	Diesel
Length:	34.95 m (114.67 ft)
Beam:	9.09 m (29.82 ft)
Cabins:	0
Berths:	0



Barcelona
Yachting



7zea.com

Description

FR

Catamaran de Passagers, Neuf en 2023, Pavillon Commercial Néerlandais.

Son sister-ship est également disponible à la vente au même prix et dans les mêmes conditions.

Possibilité de location ou de leasing sur demande.

- 248 passagers, 3 membres d'équipage et 63 vélos.
- Propulsé par 2 x MAN D2868LE443 avec 16,16 litres, 8 cylindres et 900 HP à 2 100 RPM. Le navire a une capacité de carburant de 2 000 litres et peut atteindre une vitesse de 21,5 nœuds.
- Si vous avez besoin de plus de détails, n'hésitez pas à nous contacter.
- Visite sur rdv

EN

Passenger Catamaran, New in 2023, Dutch Commercial Flag.

Its sister ship is also available for sale at the same price and under the same conditions.

Possibility of rental or leasing upon request.

- 248 passengers, 3 crew members, and 63 bicycles.
- Powered by 2 x MAN D2868LE443 with 16.16 liters, 8 cylinders, and 900 HP at 2,100 RPM. [The vessel has a fuel capacity of 2,000 liters and can achieve a speed of 21.5 knots.](#)
- [Should you require further details, please inquire.](#)

ES

Catamarán de Pasajeros, Nuevo en 2023, Bandera Comercial Holandés

Su buque sister ship también está disponible para la venta al mismo precio y en las mismas condiciones.

Posibilidad de alquiler o arrendamiento bajo petición.

- **248 pasajeros**, 3 miembros de la tripulación y 63 bicicletas.
- Propulsado por **2 x MAN D2868LE443** con **16.16 litros**, 8 cilindros y **900 HP** a **2,100 RPM**. La capacidad de combustible es de **2,000 litros**, y puede alcanzar una velocidad de **21.5 nudos**.
- Para obtener más información, no dudes en preguntar.

- Las visitas están disponibles con cita previa.

General information

Make:	RODMAN
Model:	Catamaran Passenger Ship 248 Pax RODMAN 115
Year:	2023
Condition:	Used

Engine

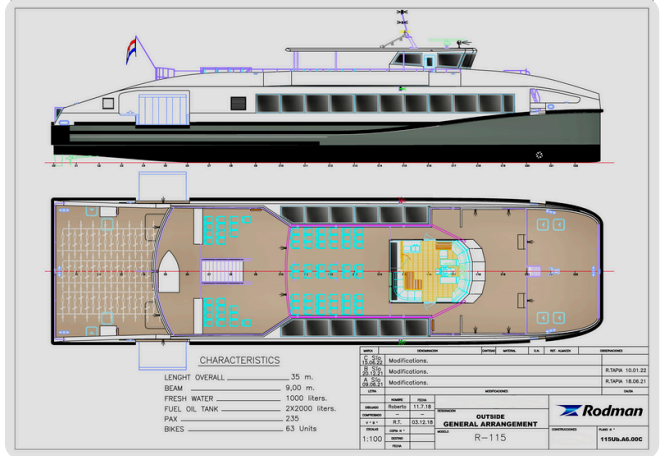
Engine:	MAN D2868LE443 900 CV - 16.16l 8 cylinders, 900 hp
Engine type:	
Fuel type:	Diesel

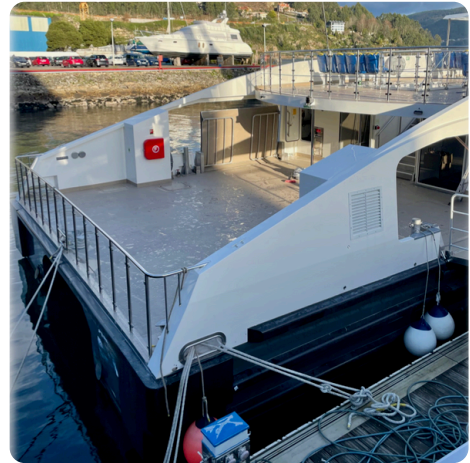
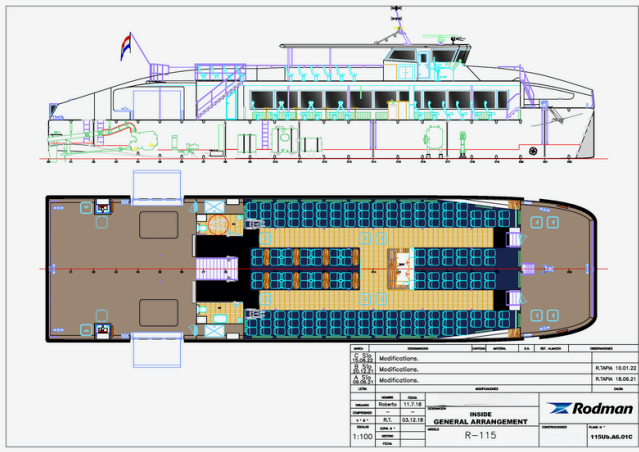
Measurements

Length:	34.95 m (114.67 ft)
Beam:	9.09 m (29.82 ft)
Deep:	1.41 m (4.63 ft)
Weight:	0 kg (0.00 lb)

Accommodation

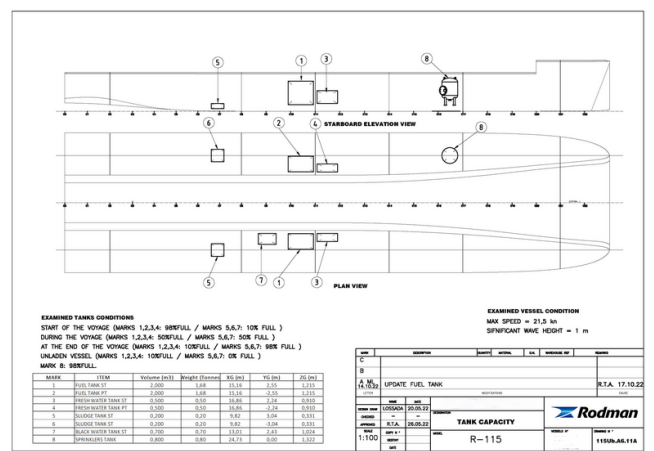
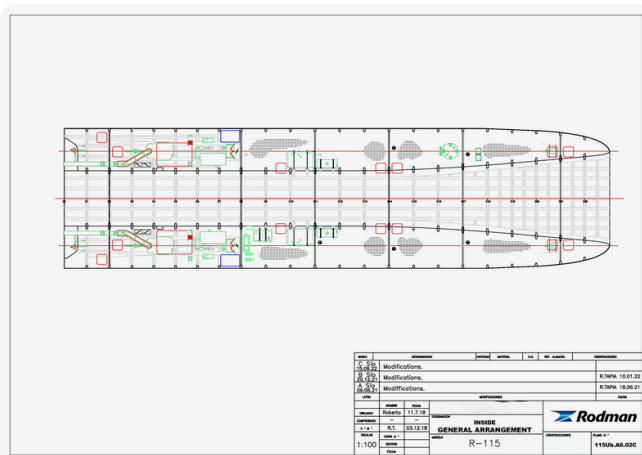
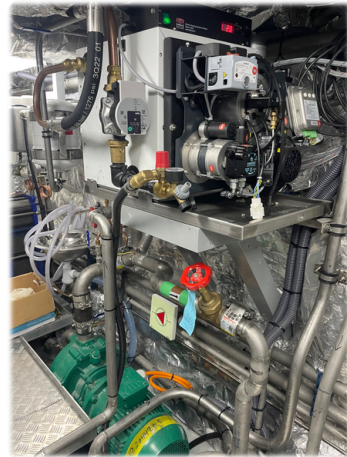
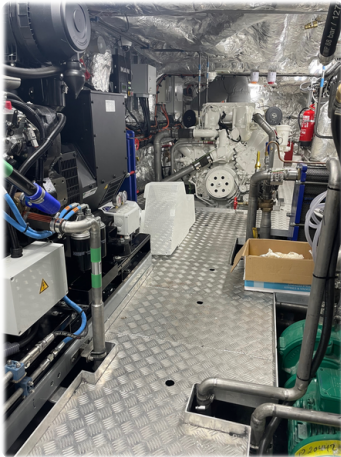
Cabins:	0
Berths:	0











Barcelona Yachting

Port Olímpic - Local 14

08005 Barcelona

Spain

Phone: +34 637 510 716

<https://www.barcelonayachting.com/>

