



Sealine 215

£12,995 • Brightlingsea Regno Unito • Usato • 1987

Presentato da

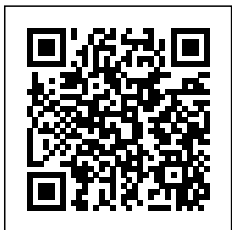
Peter Marchant
Phone: 44(0)1206302003

Morgan Marine
The Boatyard, Shipyard
Estate
CO7 0AR Colchester
Regno Unito



Dettagli

Costruttore:	Sealine
Modello:	215
Anno:	1987
Condizione:	Usato
Motore:	, 300 hp
Tipo di motore:	
Lunghezza:	7 m (22.97 ft)
Larghezza:	2.5 m (8.20 ft)
Cabine:	0
Ancoraggi:	0



Morgan Marine



7zea.com

Descrizione

EN

Discover the charm and versatility of this 1987/8 Sealine 215, recently arrived at Morgan Marine. Powered by a reliable 2009 Volvo Penta 4.3GL V6 inboard engine, this classic cruiser offers good performance and smooth handling on the water. With comfortable accommodation for up to four people, this boat features a well-designed interior that includes a separate head compartment with a toilet, sink, and shower – a rare convenience in a vessel of this size. Presented in good condition for her age and competitively priced, the Sealine 215 is ideal for weekend getaways or leisurely coastal cruising. Don't miss the opportunity to own a solid, stylish cruiser that represents fantastic value. A must-see – book your viewing today.

Cabin: 4 berths with full head height in the cabin. Salon seating with table converting into double berth. Double aft cabin berth. Separate Head compartment with toilet, sink and shower. Galley with gas cooker, twin stove, sink, fridge and storage.

Cockpit: Helm and co-pilot bench seat. Dash with steering wheel and engine controls. Cockpit seating on both sides. Cockpit carpets. Lockable sliding door into cabin. Bilge pump. Deck shower on swimming platform with hot and cold water.

Electronics: Garmin GPSmap 450s. Garmin 100i VHF. Stowe Navigator 1. Stowe Navsounder. Horn. Volvo Penta engine gauges (temperature, fuel, R/min, knots, psi, trim, voltage). Port and starboard windscreen wipers. Navigation lights. Compass. Interior lights. Switch panel. Shore power connection.

Machinery: 2009 Volvo Penta 4.3GL V6 inboard engine. Power assisted wheel steering. 2x 12v batteries charged by alternator. Isolator switch. Fuel capacity - 200 Litres. Water capacity - 90 litres.

Informazione generale

Costruttore:	Sealine
Modello:	215
Anno:	1987
Condizione:	Usato

Motore

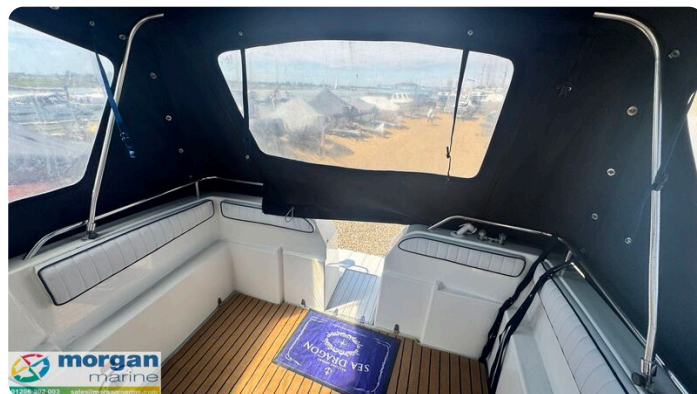
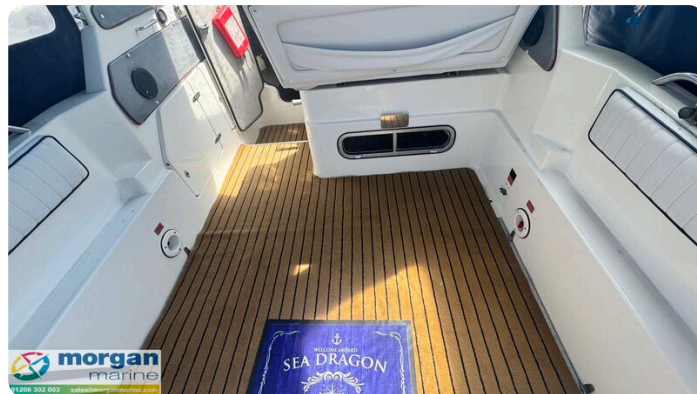
Motore:	, 300 hp
Tipo di motore:	

Misure

Lunghezza:	7 m (22.97 ft)
Larghezza:	2.5 m (8.20 ft)
Profondo:	0.8 m (2.62 ft)
Peso:	0 ()

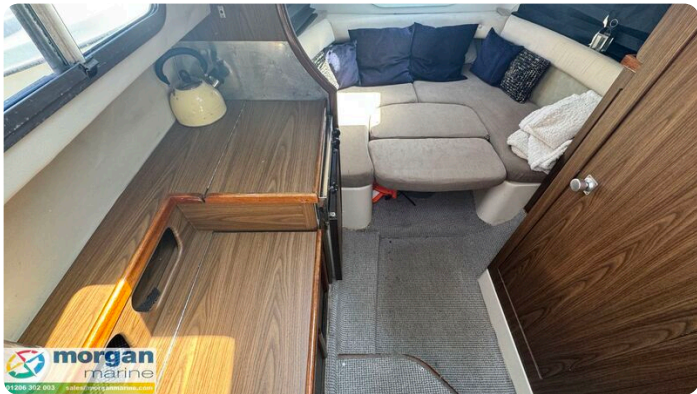
Alloggio

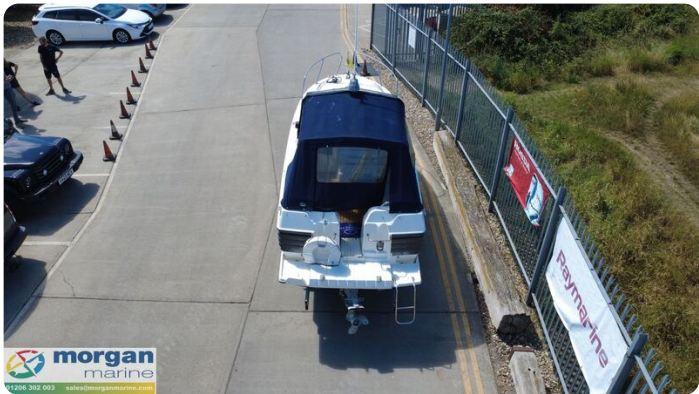
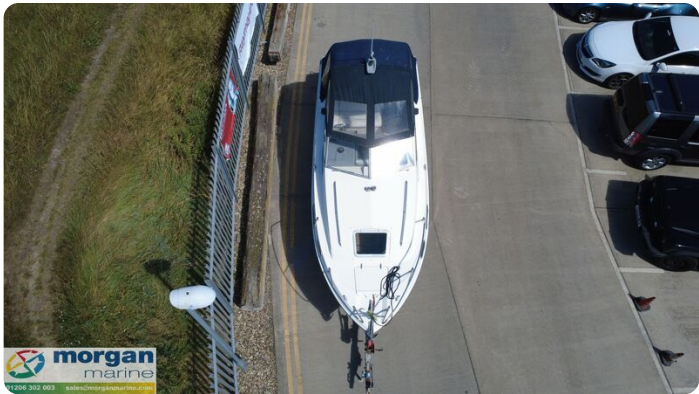
Cabine:	0
Ancoraggi:	0















Morgan Marine

The Boatyard, Shipyard Estate
CO7 0AR Colchester
Regno Unito

Telefono: 44(0)1206302003

<https://morganmarine.com>

