



# Sealine 270

£32,000 • Brightlingsea Regno Unito • Usato • 1995

## Presentato da

Peter Marchant  
Phone: 44(0)1206302003

## Morgan Marine

The Boatyard, Shipyard  
Estate  
CO7 0AR Colchester  
Regno Unito



## Dettagli

Costruttore:	Sealine
Modello:	270
Anno:	1995
Condizione:	Usato
Motore:	, 435 hp
Tipo di motore:	
Tipo di carburante:	Carburante diesel
Lunghezza:	8.51 m (27.92 ft)
Larghezza:	2.72 m (8.92 ft)
Cabine:	0
Ancoraggi:	0



Morgan Marine



7zea.com

## Descrizione

EN

Sealine 270 Sports cruiser powered by a Volvo KAD 43 6 Cylinder diesel engine. It has 4 berths and is in good condition. With a separate head compartment - sea toilet, sink, shower - Hot and cold pressurised water. Diesel heating, new upholstery, great accommodation for this size of cruiser. This boat is perfect for family days out on the water. New turbo fitted in June 2022. A definite must see! Full survey (February 2023) available.

Deck: Boarding platform and ladder. Cleats. Stainless steel handrails. Deck Hatch. Anchor with windlass. Blue canopy. Guard rails. Pulpit. Fenders and rope.

Cabin: 4 berths with full head height in the cabin (1.8m). Double aft cabin berth. Galley with sink, cooker and fridge. Saloon seating with table converting into double berth. Separate Head compartment with sea toilet, sink and shower - H/C Pressurised Water. Curtains and carpet.

Cockpit: Helm and co-pilot bench seat. C- shape cockpit seating with table. Lockable sliding door into cabin. Electronic Gauges.

Electronics: Navman 5600 tracker and JRC Radar. Icom VHF radio. Nav lights. Eberspacer diesel heating. Trim tabs. Shore power + Battery charger. 2x Windscreen wipers. Electric and manual bilge pump. Isolator switches. Horn.

Machinery: Volvo KAD 43 6 Cylinder diesel engine. Fuel capacity - 350 Litres. Water capacity - 154 Litres.

### Informazione generale

Costruttore:	Sealine
Modello:	270
Anno:	1995
Condizione:	Usato

### Motore

Motore:	, 435 hp
Tipo di motore:	
Tipo di carburante:	Carburante diesel

### Misure

Lunghezza:	8.51 m (27.92 ft)
Larghezza:	2.72 m (8.92 ft)
Profondo:	1.2 m (3.94 ft)
Peso:	0 ()

### Alloggio

Cabine:	0
Ancoraggi:	0

## Immagini



Sealine-270-MAIN



Sealine-270-main





Sealine-270-storage



Sealine-270-gallery



Sealine-270-dash



Sealine-270-table



Sealine-270-seating-area





Sealine-270-isolator-switch



Sealine-270-cockpit



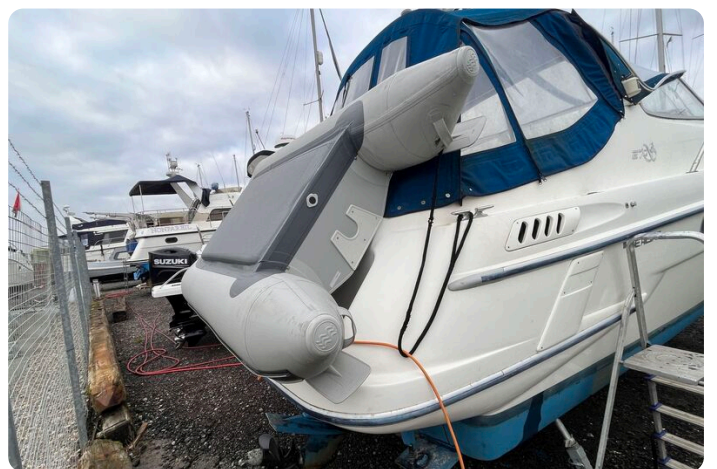
Sealine-270-storage



Sealine-270-engine



Sealine-270-engine-2



Sealine-270-digny





Sealine-270-prop



Sealine-270-side



Sealine-270-back



Sealine-270-side-view



Sealine-270-roof



Sealine-270-bow

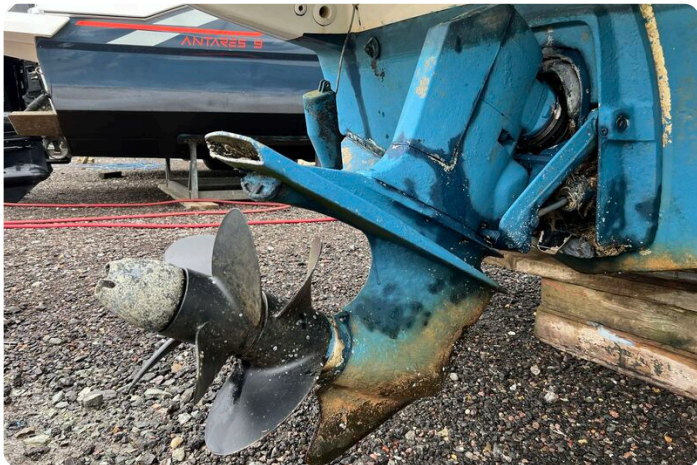




Sealine-270-bow



Sealine-270-side-3



Sealine-270-prop



Sealine-270-wheel



Sealine-270-pilot-seat





Sealine-270-wheel



Sealine-270-dash



Sealine-270-berth



Sealine-270-aft-berth



Sealine-270-clocks



Sealine-270-doors





Sealine-270-fridge



Sealine-270-berth



Sealine-270-steps



Sealine-270-toilet







Sealine-270-dash-area



Sealine-270-door



Sealine-270-galley



Sealine-270-cooker





Sealine-270-BACK



**Morgan Marine**

The Boatyard, Shipyard Estate  
CO7 0AR Colchester  
Regno Unito

Telefono: 44(0)1206302003

<https://morganmarine.com>

