



# Sealine F42

£299,950 • Lymington Regno Unito • Usato • 2011

## Presentato da

Justin Garwell  
Phone: +44 (0) 1305 766504

**JD YACHTS LIMITED**  
80 THE ESPLANADE  
DT4 7AA WEYMOUTH  
Regno Unito

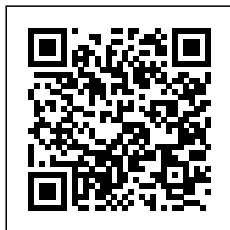


## Dettagli

Costruttore:	Sealine
Modello:	F42
Anno:	2011
Condizione:	Usato
Motore:	Volvo Penta IPS600, 435 hp
Tipo di motore:	
Tipo di carburante:	Carburante diesel
Lunghezza:	13.6 m (44.62 ft)
Larghezza:	4.48 m (14.70 ft)
Cabine:	0
Ancoraggi:	0



JD YACHTS  
LIMITED



7zea.com

# Descrizione

---

ENG

2011. 2 x 435 HP Volvo Penta IPS600  
5 berths in 2 cabins  
Lying: Lymington UK

ENG

Extras

NEW Flybridge Upholstery  
NEW Cockpit Upholstery  
Raymarine HybridTouch MFD GPS/Chartplotter to Upper Helm  
Raymarine Radome  
Raymarine Speed Log To Lower & Upper Helm Stations  
Raymarine Depth Log To Lower & Upper Helm Stations  
Additional 3rd Volvo Penta Joystick Docking Control located in Cockpit  
Generator  
2 X Eberspacher Diesel Heating  
Fusion Stereo  
Holding Tank  
Flybridge Bimini  
Cockpit Griddle  
Cockpit Fridge  
2 x 50 inch SMART TVs  
2 x Additional SMART TVs

Standard Specification

Deck

Anchor, Delta 20 kg with 40m of chain  
Anchor locker, self draining  
Anchor safety leash  
Deck moulding, non slip  
Fender strip, silver anodised aluminium with black rubber insert  
Foredeck hatch, opening  
Fuel and water deck fillers  
Navigation lights, full set  
Open bow pulpit and guard rails in stainless steel  
Windlass, reversible electric  
Bow cleat  
Spring cleats, 4  
Mooring cleats, 4  
Covered foot switches for windlass operation  
Shore power socket  
Low level LED lighting  
Scuppers both port and stbd forward of steps  
Large, full height screen, clear toughened glass  
Full glass side window to port and starboard with opening system

Cockpit & Bathing Platform

Teak laid and self-draining  
Teak steps to flybridge with LED lighting  
Seating, □□ shaped to starboard  
3 Piece sliding patio door  
Under seat gas locker to stbd  
Fender stowage in transom seat  
Access to the lazarette under transom seat  
Manual bilge pumps (2) in recess  
Spotlighting  
Bathing platform, teak laid  
Swim ladder with flush sockets in platform  
Handrails in stainless steel  
Bathing shower with hot and cold water  
Transom door, hinged  
Access hatch to engine room, lockable with gas struts

Storage in port coaming adjacent to transom gate  
Port stowage locker with provision for BBQ  
Port stowage bin in coaming side with provision for fridge  
Fuel taps  
Stowage below flybridge steps  
Stowage below transom seat adjacent to gas locker  
Stowage bin below engine hatch  
Main battery isolator switch  
Lazarette (lockable) with access steps, light & access hatches to engineering spaces, ventilated oilskin hanging area

Flybridge

Fwd facing seating port and stbd, stbd converts to bench  
Storage cupboards to port mid and port aft  
Handrail on entrance to flybridge  
Table, GRP with cup holders (4)  
Mast, GRP and hinged  
Anchor & steaming light, stern light, flag hooks, VHF radio aerial, Raymarine GPS locator, TV aerial, ensign socket and staff  
Low level LED lighting and lighting to flybridge steps

Upper Helm

Sealine steering wheel, Tilt  
Volvo engine instrumentation, full set  
Engine controls, joystick and single lever throttles  
Compass, side reading  
Speed and depth log, Raymarine ST60 (2 gauges)  
VHF, Ray 240 E radio  
12 V DC socket  
Cup holders, self draining, 4  
Stowage  
Dual helm bench seat, adjustable and converting to social seating

Saloon

Sideboard port side unit with storage  
Radio, CD (2) speakers  
L shaped seating to stbd  
Moveable seats (2 +1) to port, with storage inside  
Above used to convert L shaped seating to extra occasional berth  
Surround windows, with opening port and starboard  
Drop down blinds on flat side screens  
Spot lighting  
Table wooden - folding (moves to cockpit)  
Electronic weather station  
Provision for TV with storage under  
Sockets, double (2) 230V (AC)

Lower Helm

Sealine steering wheel, Tilt  
Double sliding helm seat  
Volvo engine instrumentation, full set  
Engine controls, joystick and single lever throttles  
Armrest with stowage locker below  
Compass, side reading  
12V DC Socket  
Speed and depth logs, Raymarine ST60 (2 gauges)  
VHF, Ray 240 E radio  
Chart area (Min A4)  
Cup holder (2 min)  
Storage boxes (3)

Galley

Large fridge with freezer with auto 12/230 V changeover  
Spotlighting

Lighting above eye level cupboards  
High level oven and grill, gas  
Sink, stainless with mixer tap  
Sockets, double (2) 230V (AC)  
Soft close storage cupboards at worktop level  
Soft close storage cupboards at eye level  
Stove, gas (2) burner  
Extractor fan above hob  
Under floor storage (2)  
Wooden steps to saloon with storage/bins under  
Storage under lobby floor (without waste tanks)  
Full height shelving unit in lobby

#### Master Forward Cabin

Berth, double with storage below  
Vanity storage, port and stbd  
Soft close wardrobes to port & stbd.  
Mirror on back of stbd door  
Single door to Galley  
Magnetic floor mounted door stops  
Door to shower  
Door to head  
Portlights to port (1) and stbd. (1), both opening  
Curtains  
Skylight hatch, opening with blind  
Skylight fixed, aft of opening hatch  
Sockets, single (2) (230V AC) port & stbd  
Reading light (2)  
Spotlighting  
Concealed lighting  
Soft close eye level cupboards to port and stbd  
Carpet to floor

#### Master En-suite Shower

Spotlighting  
Porthole, opening, frosted  
Shower curtain  
Handheld shower & bracket  
Towel rail & robe hook  
Shower seat  
Shelf & fiddle rail  
Extraction  
Non slip GRP

#### Master En-suite Head

Cup, toilet roll holders  
Toilet brush & holder  
Hand basin with mixer tap  
Spotlighting  
Vanity unit above sink with mirror  
Frosted portlight, opening  
Shaver socket  
Storage cupboard, low level  
Toilet, Electric Quiet Flush  
Towel rail & robe hook  
Shelf & fiddle rail  
Blind  
Non slip GRP floor

#### Mid Cabin

Berth, with slide conversion from double to 2 singles  
Storage under front of bed  
3rd berth to stbd  
Low level locker under step  
Soft close full height wardrobe to stbd  
Soft close full height shelving unit to stbd  
Amidships locker unit & shelf  
Door (with obscured gazing) to Galley  
Closure of cabin to en-suite to create day head/shower  
Door to en-suite bathroom  
Large bonded windows to port and stbd , with inset opening  
Blinds

Reading Lights (3)  
Spotlighting  
Sockets, single (2) (230V AC) port & stbd  
Escape hatch to saloon

#### En-suite Bathroom To Mid Cabin / Day Head

Cup & toilet roll holder  
Toilet brush & holder  
Hand basin with mixer tap  
Mirror with vanity unit behind  
Storage in aft bulkhead  
Frosted portlight, opening  
Extraction  
Blind  
Shaver socket  
Separate stall shower with glass door  
Handheld shower & bracket  
Storage cupboard, low level  
Towel rail & robe hook  
Toilet, electric quiet flush  
Spotlighting  
Non slip GRP floor  
Skylight to saloon

#### Mechanical

Water tank, capacity □ 450 litres  
Bilge pumps, automatic electric (2) and manual (2)  
Engine room sound proofing  
Engine room fans (automatic)  
Engine room lights  
Fire extinguisher system, automatic and manual, in engine room with controls at both helms  
Fuel tanks, 600 litres ea. (2)  
Fuel filters for engines  
Steering, Electric  
Screen demisters running from engines (maintains clear screen only)

#### Electrical

AC system, 230V with shore support system  
Batteries - domestic and stbd engine 4 x 105 Ah  
Batteries - port engine 2 x 105 Ah with link switch  
Batteries - Bow 1 x 105 Ah  
Battery charger, 40 amp  
Calorifier with immersion heater (55 litre)  
DC system, 12V system  
Fresh water pump  
Water tank gauge  
Shore power cable  
Pantograph wipers, dual speed  
Screen wash on both wipers

#### Decor

Walnut furniture  
Flooring walnut, galley and lower helm  
Flooring carpet, saloon and cabins  
Upholstery interior - Linara fabric  
Mattresses - split foam hi-comfort  
Solid core matt black work surface in galley  
Solid core matt black work surface in master and mid cabin en-suite heads

#### Canopies

Rear canopy 3 piece, with detachable sides including zipped access door and clear flexible windows  
Rear canopy clamshell with easy drop down functionality  
Two piece side canopies with roll up door section  
Windscreen cover, PVC white  
Lightweight flybridge tonneau cover with restraint system

## Informazione generale

Costruttore:	Sealine
Modello:	F42
Anno:	2011
Condizione:	Usato

## Motore

Motore:	Volvo Penta IPS600, 435 hp
Tipo di motore:	
Tipo di carburante:	Carburante diesel

## Misure

Lunghezza:	13.6 m (44.62 ft)
Larghezza:	4.48 m (14.70 ft)
Profondo:	1.15 m (3.77 ft)
Peso:	12900 ()

## Alloggio

Cabine:	0
Ancoraggi:	0

## Immagini

---



Image courtesy of JD Yachts



Image courtesy of JD Yachts



Image courtesy of JD Yachts



Image courtesy of JD Yachts



Image courtesy of JD Yachts



Image courtesy of JD Yachts



Image courtesy of JD Yachts



Image courtesy of JD Yachts



Image courtesy of JD Yachts



Image courtesy of JD Yachts



Image courtesy of JD Yachts



Image courtesy of JD Yachts



Image courtesy of JD Yachts



Image courtesy of JD Yachts



Image courtesy of JD Yachts



Image courtesy of JD Yachts



Image courtesy of JD Yachts



Image courtesy of JD Yachts



Image courtesy of JD Yachts



Image courtesy of JD Yachts



Image courtesy of JD Yachts



Image courtesy of JD Yachts



Image courtesy of JD Yachts



Image courtesy of JD Yachts



Image courtesy of JD Yachts



Image courtesy of JD Yachts





Image courtesy of JD Yachts



Image courtesy of JD Yachts



Image courtesy of JD Yachts



Image courtesy of JD Yachts



Image courtesy of JD Yachts

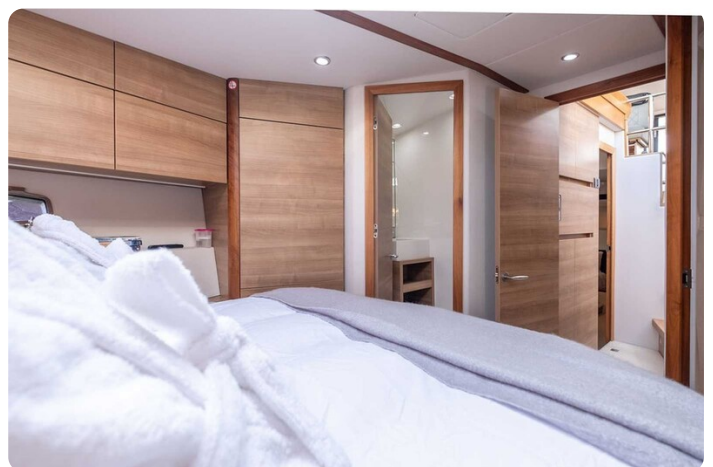


Image courtesy of JD Yachts



Image courtesy of JD Yachts



Image courtesy of JD Yachts



Image courtesy of JD Yachts



Image courtesy of JD Yachts



Image courtesy of JD Yachts

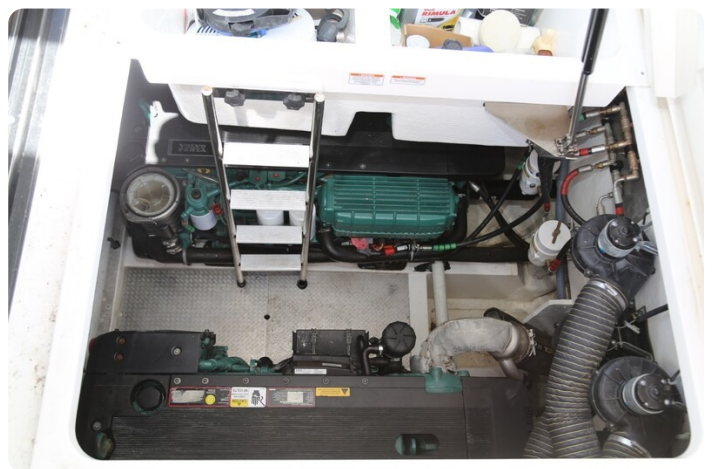


Image courtesy of JD Yachts



Image courtesy of JD Yachts



Image courtesy of JD Yachts



Image courtesy of JD Yachts



Image courtesy of JD Yachts



Image courtesy of JD Yachts



Image courtesy of JD Yachts



Image courtesy of JD Yachts



Image courtesy of JD Yachts

**JD YACHTS LIMITED**

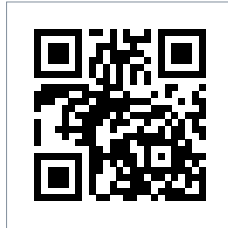
80 THE ESPLANADE

DT4 7AA WEYMOUTH

Regno Unito

Telefono: +44 (0) 1305 766504

<http://jdyachts.com>



 YACHTS.

The logo consists of a stylized 'JD' monogram in orange and white, followed by the word 'YACHTS.' in white, all set against a black square background.