



# Sealine SC35

£130,000 • Brightlingsea United Kingdom (UK) • Used • 2011

## Presented by

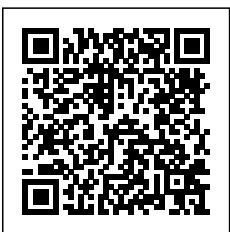
Peter Marchant  
Phone: 44(0)1206302003

**Morgan Marine**  
The Boatyard, Shipyard  
Estate  
CO7 0AR Colchester  
United Kingdom (UK)



## Details

Make:	Sealine
Model:	SC35
Year:	2011
Condition:	Used
Engine:	, 660 hp
Engine type:	
Fuel type:	Diesel
Length:	11.1 m (36.42 ft)
Beam:	3.77 m (12.37 ft)
Cabins:	0
Berths:	0



Morgan Marine



7zea.com

# Description

EN

Just in at Morgan Marine - Sealine SC35 powered by twin Volvo D4 260hp diesel engines. This is a good example of this popular spacious cruiser - with only 715 hours approx. use. First launched in 2011 she has been very much well loved by her current owner with fantastic service history. Exquisite interior lavishly finished with woodwork, but also practical and well designed. "Madi Madi" will cruise at 25 knots, with a top end around 30 knots fully loaded. Highly equipped with bow thruster, Electric windlass, Raymarine electronics, diesel powered heating and much more! Early viewing advised!

Deck: Bathing platform with teak flooring and swim ladder. Engine room locker with ladder. Stainless steel handrails. Aft cockpit canopy. Fenders and ropes. Mooring cleats. Self draining cockpit. Opening stern cockpit door. Wood cockpit table with U-shape cushion seating - with sunbed conversion using table, including chaise lounge fwd. Wet bar with sink, fridge and grill. Transom shower. Electric windlass with anchor and chain. Storage lockers. Forward hatch.

Cabin: Forward double berth with roof hatch, deck windows + blinds + storage lockers and lighting. Aft cabin with 2x single berths with storage. High spec galley to starboard side with gas burner, sink, oven, fridge and storage cupboards. L-shaped saloon cushioned seating with fold out wooden table and TV. Carpet throughout. Toilet compartment with head, washbasin, and separate shower cubicle, mirror and storage - Two doors to toilet compartment. Eberspacher hot air heating.

Cockpit: Wheelhouse with plexiglass sliding door to saloon area. Large glass windscreen with port and starboard windscreen wipers + screen wash. Fold back roof. Helm position with large bench seat and footrest with storage, dash with full engine controls, electronics and compass. Chart table holder with Perspex lid. Port side saloon seating with fold out table. Starboard side wet bar with sink, gas burner, fridge and storage. Cup holders.

Electronics: Raymarine C120 chartplotter. Raymarine Tridata and smart meter. MRC-2 marine remote commander sound system. Engine gauges including ( fuel, RPM, Trim, Battery voltage, and temp). 12v socket. JVC player. Horn. Electric windscreen wipers. Breaker panel with switches. 240V Shore power. 220v water heater. Navigation lights.

Machinery: Twin Volvo D4 260hp diesel engines with dual throttle control. Serviced in March 2024 + regular service history. Bow thruster. Manual and electric bilge pumps. Fuel capacity - 750 Litres. Water capacity - 214 Litres.

## General information

Make:	Sealine
Model:	SC35
Year:	2011
Condition:	Used

## Engine

Engine:	, 660 hp
Engine type:	
Fuel type:	Diesel

## Measurements

Length:	11.1 m (36.42 ft)
Beam:	3.77 m (12.37 ft)
Deep:	1.09 m (3.58 ft)
Weight:	0 ()

## Accommodation

Cabins:	0
Berths:	0



# Images















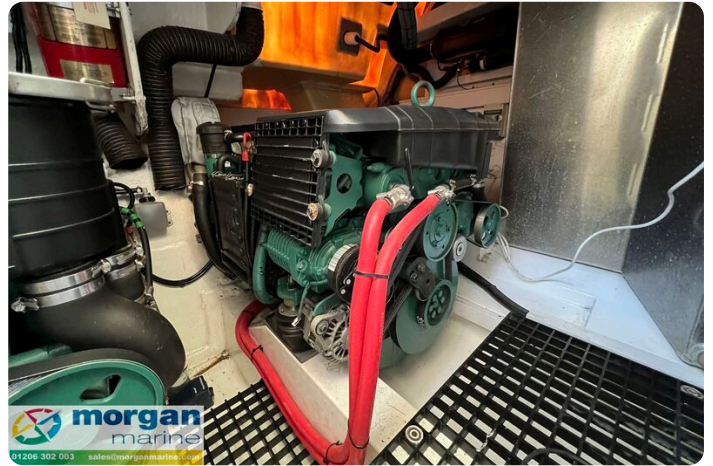




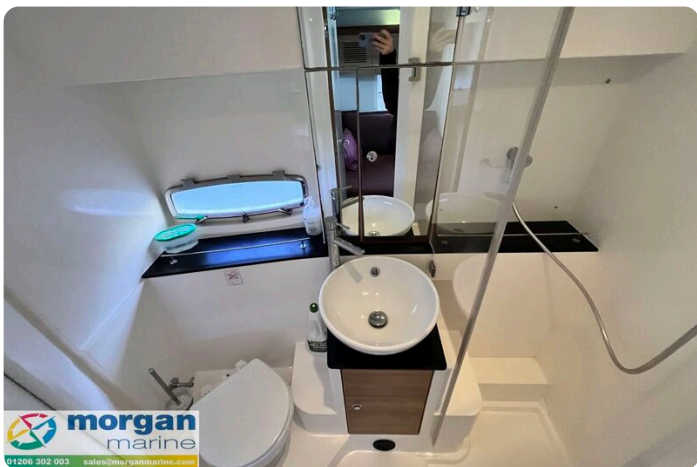






















**Morgan Marine**

The Boatyard, Shipyard Estate  
CO7 0AR Colchester  
United Kingdom (UK)

Phone: 44(0)1206302003

<https://morganmarine.com>

